



**Maximize space, increase productivity,  
and accommodate everyone**

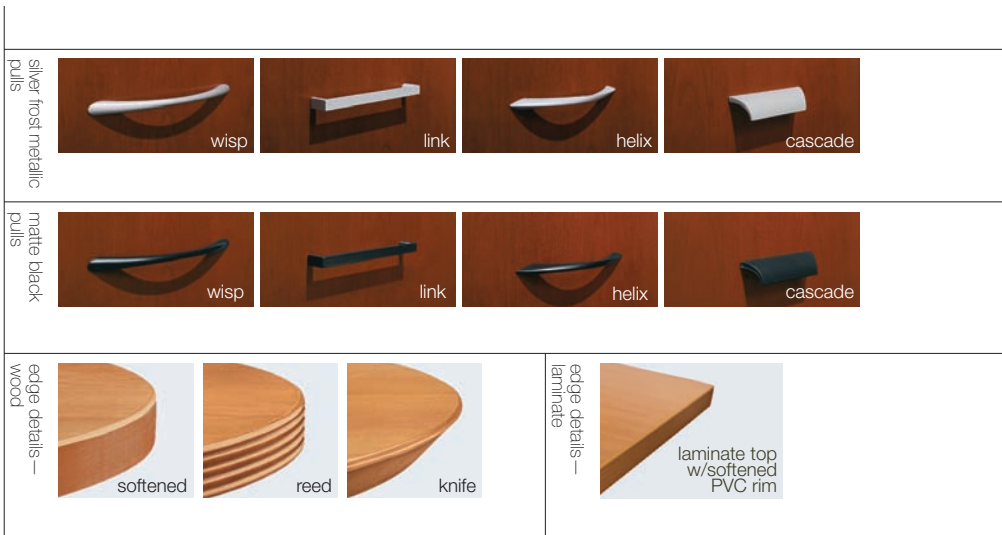
A comprehensive caseworks platform, available in veneer or laminate, Priority supports every type of work environment. Its intelligent mix of components fits an extensive range of design, application, space and budget challenges. It will help you make a memorable impression with clients and will have employees saying, "This is where I want to work."

Kimball® Office

PRIORITY™

**Priority™ casegoods are aesthetically and functionally flexible**

- The entire line is available in laminate—honey, amber, autumn, or mocha woodgrain laminate and nine solid colors, including designer white, antique white, storm, cloud, graphite, cinder, fog, sandstone, and chamois. And you can mix laminate colors on chassis, and tops or fronts.
- Priority wood offers premium veneers in a variety of wood stain colors, with Pura® UV finish, plus metal and glass accents.
- Fully assembled, modular, and mobile components.
- Hinged modesty panels and cable management throughout components make access to power/data sources quick and easy.
- Full line includes bookcases, occasional tables and wardrobes.
- Height-adjustable pieces ensure individual comfort and productivity.



Priority may contribute to LEED® credits. Please refer to our Environmental Data Sheets, located on [www.kimballoffice.com](http://www.kimballoffice.com), for specific details.



Priority meets SCS Indoor Advantage™ certification.



the BIFMA sustainability standard

Priority is level™ 1 certified. level™ provides an easy way to understand how our products can contribute to your sustainability goals. level™ ensures a comprehensive, independent, and impartial assessment of the environmental and social impacts of a product's manufacture to the BIFMA e3 sustainability standard.

Find inspiration and gather information regarding Kimball Office and relevant workplace solutions at [www.kimballoffice.com](http://www.kimballoffice.com)

**Kimball™ Office**  
www.kimballoffice.com

A unit of Kimball International  
1600 Royal Street, Jasper, Indiana 47549  
800.482.1818

SSPRI ver. 10