

Single Circuit Power

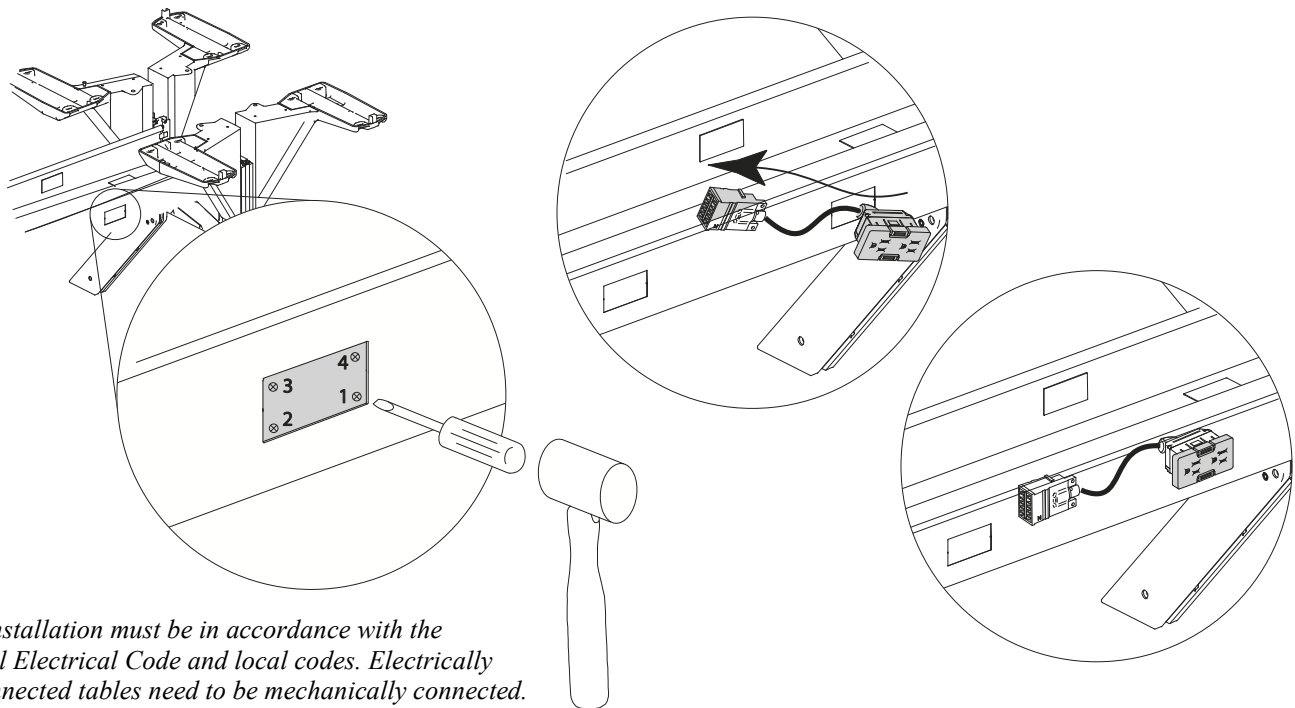
Tools Required

- Mallet
- Flathead Screwdriver

Installation

The single circuit electrical system plugs into a 110VAC 15 amp wall or floor outlet and can provide electrical power for up to eight duplex receptacles. The system consists of five UL962 recognized components. (Figure A).

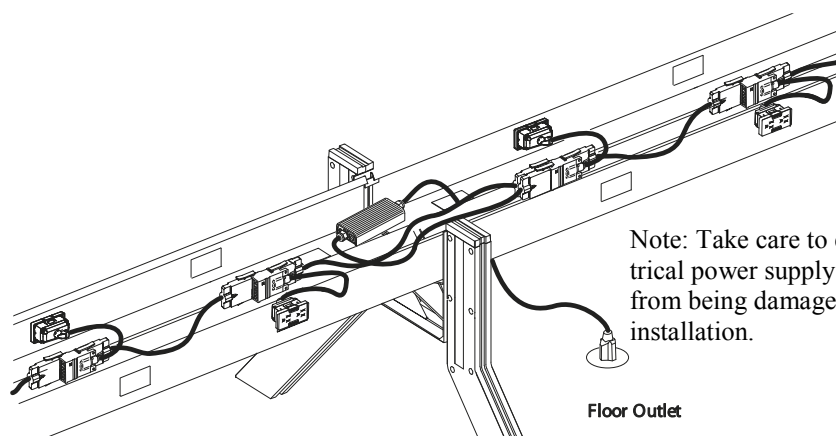
Figure A



Note: Installation must be in accordance with the National Electrical Code and local codes. Electrically interconnected tables need to be mechanically connected.

Figure B

Warning: Receptacles must be installed at knockout locations that keep any slack of the interconnecting cord to less than 2 inches. All of the cords must be contained inside the electrical tray. The total length of all of the cords of the electrical components connected together cannot add up to more than 40 feet (12 Meters), not counting the power supply cord. A new powered run must be started if this requirement hinders an installation.



Note: Take care to ensure that the electrical power supply cord is protected from being damaged or pinched after installation.

Proper product installation, in accordance with these instructions, is the responsibility of the installing agent. If you have any questions concerning these instructions, please call Kimball Office Customer Care.

Kimball®Office