



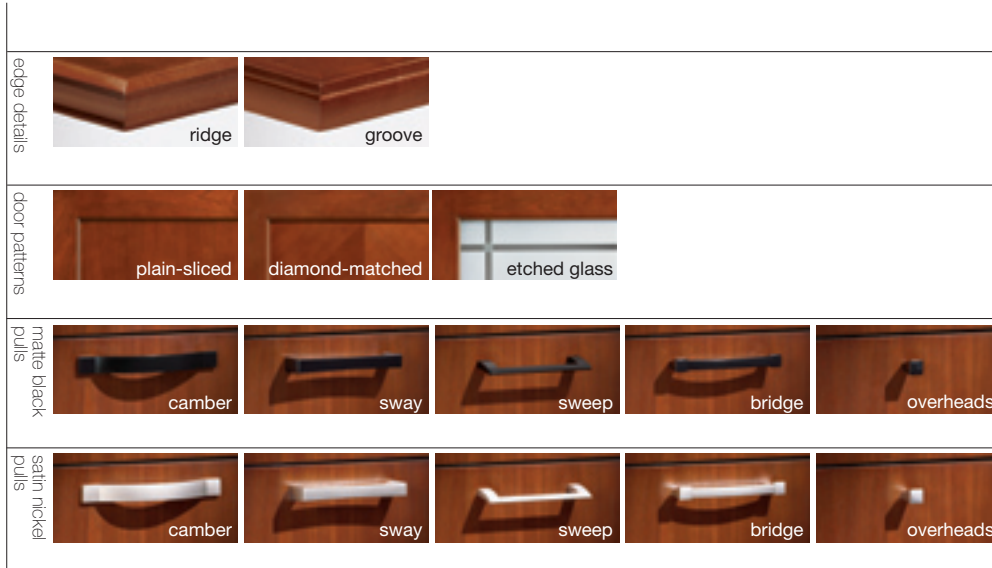
**Make functionality beautiful, efficiency elegant, and full potential a reality**

From reception areas to manager offices to executive suites, Transcend's versatile aesthetics and specially designed storage components free you to design environments that connect with clients and accommodate different job functions, work styles and personal preferences.

Kimball® Office

TRANSCEND®

**Better workspaces inspire better performance**



- Transcend updates the classic desk form, with a molded plinth base and overhanging worksurface.
- Beautiful Cherry and Walnut veneers, a rich array of finish choices, and transitional detail elements result in a pleasing blend of classic and contemporary.
- Four unique pull styles—Camber, Sway, Sweep and Bridge in Satin Nickel or Matte Black; and two solid wood edge profiles—Ridge or Groove.
- Choose from plain-sliced or diamond-matched veneer or frosted glass etched with a crisscross pattern for wood doors on overhead storage.
- Integrated power and data management solutions like worksurface power/data centers, hinged pedestal doors and modesty panels, and undersurface cable managers provide quick connectivity.
- A comprehensive statement of line includes pre-assembled units that are easy to specify and install, as well as modular components to address individual needs.



Transcend may contribute to LEED credits. Please refer to our Environmental Data Sheets, located on [www.kimballoffice.com](http://www.kimballoffice.com), for specific details.



the BIFMA sustainability standard

Transcend is level™ 1 certified. level™ provides an easy way to understand how our products can contribute to your sustainability goals. level™ ensures a comprehensive, independent and impartial assessment of the environmental and social impacts of a product's manufacture to the BIFMA e3 sustainability standard.

Find inspiration and gather information regarding Kimball Office and relevant workplace solutions at [www.kimballoffice.com](http://www.kimballoffice.com)

**Kimball®Office**  
[www.kimballoffice.com](http://www.kimballoffice.com)

A unit of Kimball International  
 1600 Royal Street, Jasper, Indiana 47549  
 800.482.1818

SSTRN ver. 09