

Interworks® EQ

Privacy Panel

Tools Required

Level, Pencil

Kit Includes

Privacy Panel, Attachment Bracket, Double-sided Tape, Caster, Pivot Bracket with Carpet Gripper

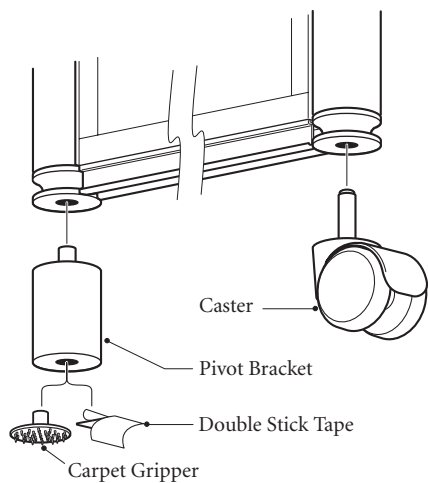
Installation

These instructions apply to installation of a Privacy Panel. You can install the Privacy Panel at any point across the face of an Interworks EQ Panel.

Step 1

Pivot Bracket and Caster

- If necessary for installation on non-carpeted floor, pry carpet gripper out of pivot bracket
- Replace with double-stick tape
- Insert pivot bracket and caster into bottom of privacy panel
- Seat firmly



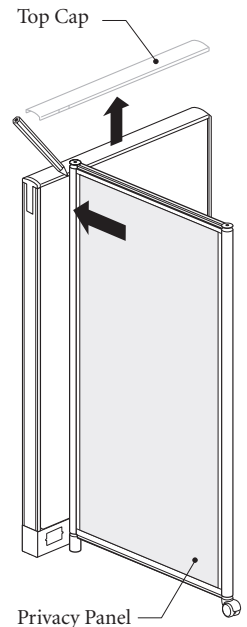
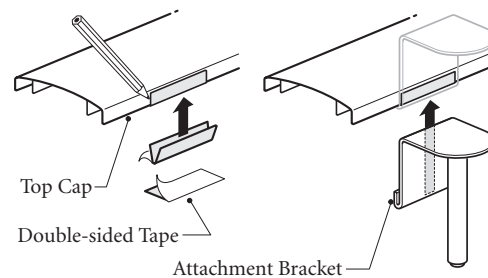
Step 2A

Attachment Bracket

- Stand privacy panel against panel
- Mark edge-width on top cap
- Remove top cap
- Cut double-sided tape to width of mark

Step 2B

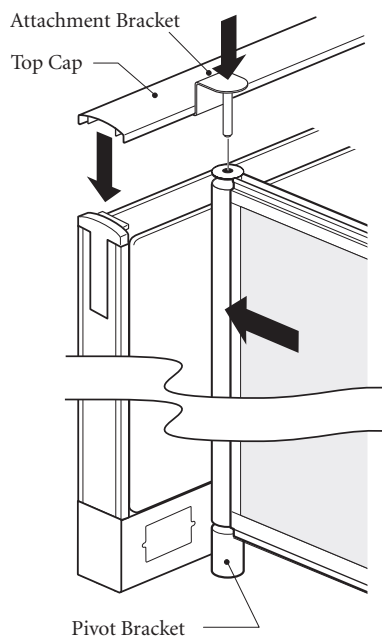
- Fold tape lengthwise, stick to inside and outside of top cap
- Remove backing
- Press attachment bracket firmly onto tape



Step 3

Attach to Panel

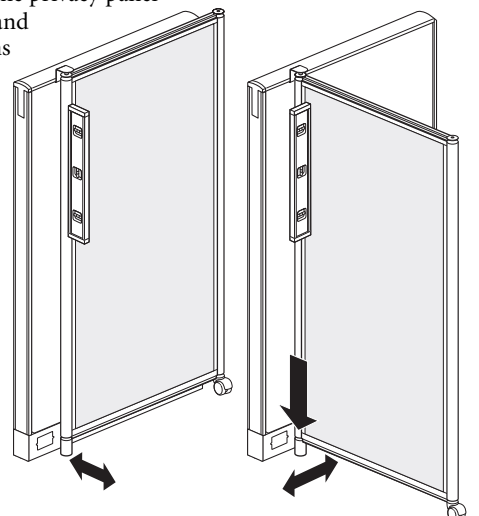
- Insert attachment bracket into privacy panel on the pivot bracket side
- Replace top cap onto panel



Step 4

Level Privacy Panel

- Adjust position of pivot bracket and caster to level the privacy panel
- Level in open and closed positions
- When leveled, press down to anchor pivot bracket



Proper product installation, in accordance with these instructions, is the responsibility of the installing agent. If you have any questions concerning these instructions, please call Kimball Office Customer Service.

Kimball Office