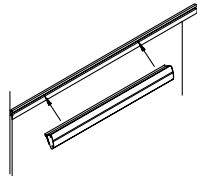


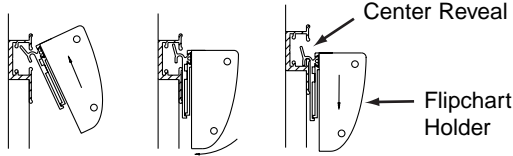
**1** Firmly grasp Flip Chart Holder and position in front of Traxx. Tilt top of Flip Chart Holder towards rail (Figure A).

**Figure A**



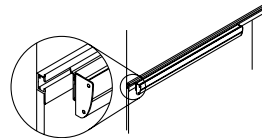
**2** Insert extrusion on back of Flip Chart Holder into center reveal of Traxx. Rotate bottom of Flip Chart Holder in towards rail. Press down on Flip Chart Holder, ensuring extrusion hooks onto lower channel of center reveal of Traxx (Figure B).

**Figure B**



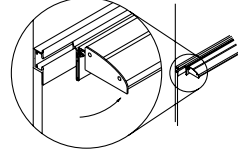
**3** Press firmly along length of Flip Chart Holder to secure in locked position (Figure C).

**Figure C**



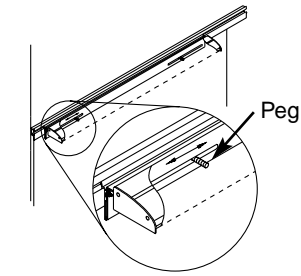
**4** To mount paper onto Flip Chart Holder, rotate bottom edge of holder cover upward to open position (Figure D).

**Figure D**



**5** Reposition pegs to match holes in chart paper pad (Figure E).

**Figure E**

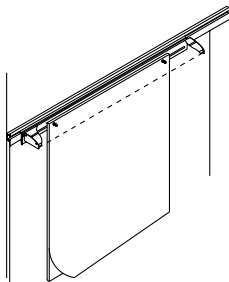


**Note:** If Flip Chart Holder is mounted to upper channel of Traxx, the anti-dislodgement feature will not engage and will prevent the Projection Screen or Marker Swivel Board from passing over the Flip Chart Holder.

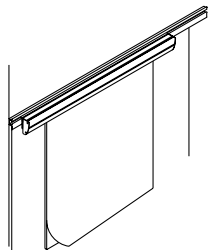
**6** Place chart paper pad over pegs. (Figure F).

**7** Rotate holder cover downward to normal operating position (Figure G).

**Figure F**



**Figure G**



**TRAXX®**  
Assembly Instructions

**Flip Chart Holder**

**Recommended Tools**

- None

**Package Contents**

**Qty.**

- Flip Chart Holder 1



Telephone 800.482.1818  
Fax 812.482.8300  
www.furniture.kimball.com

Form #AISYTR005-00  
#1469024

Printed in U.S.A  
© 2000 Kimball International, Inc.

Proper product installation, in accordance with these instructions, is the responsibility of the installing agent. If you have any questions concerning these instructions, please call Kimball Customer Care Teams.