

Approach™

Seat & Back Removal/Insert Assembly

Installation

1. While lifting front edge of seat pad, with palm of hand gently hit front right and front left of seat pad to release seat clips.
Note: Seat slider model must be placed all the way back before removing. (Figure A).
2. Remove seat pad from seat. (Figure B).
3. Gently slide new seat pad from front to back of seat until it drops into place. (Figure C).
4. Using palm of hand, press firmly on each of the four corners of the seat to engage clips. (Figure D).

Figure A

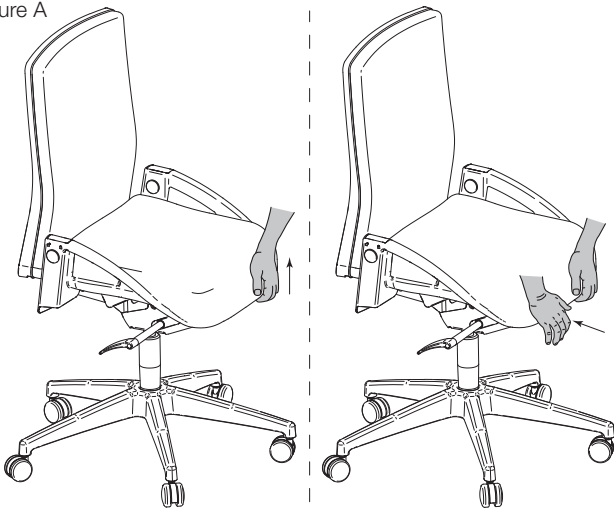


Figure B

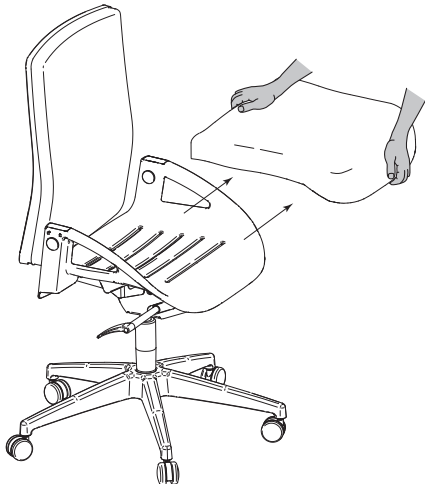


Figure C

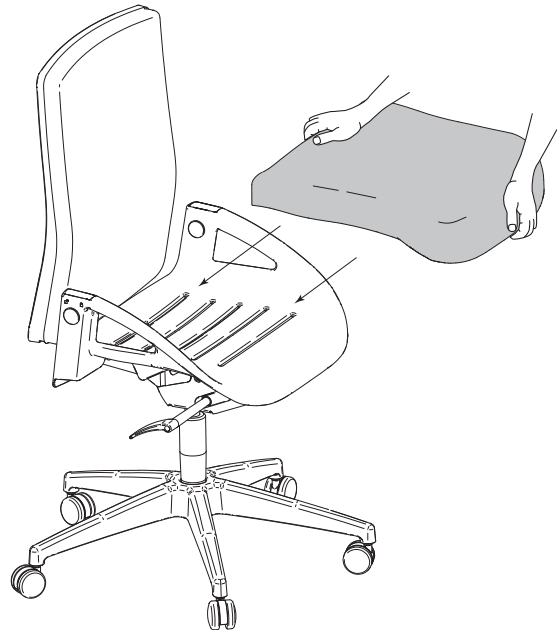
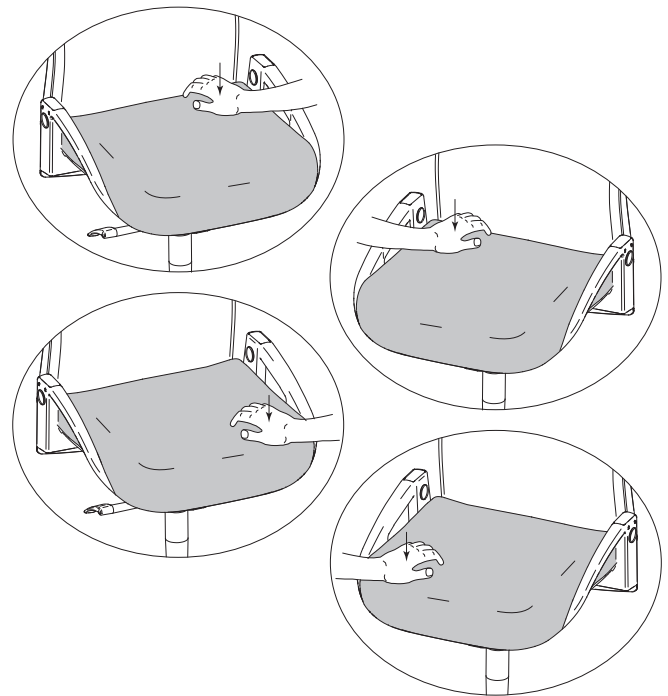


Figure D



Proper product installation, in accordance with these instructions, is the responsibility of the installing agent. If you have any questions concerning these instructions, please call Kimball Office Customer Service.

Kimball Office

Approach™

Installation (continued)

5. Remove Upholstered Seat Pad. (Refer to Step 1 & 2).
6. Un-hook two clips at bottom of back. (Figure E).
7. Slide Back pad up and pull off of front of back. (Figure F).
8. Align new back pad with slot at top of back, insert in and slide down. (Figure G & H).
9. Snap hooks at bottom of pad to back. (Figure I.).

Figure E

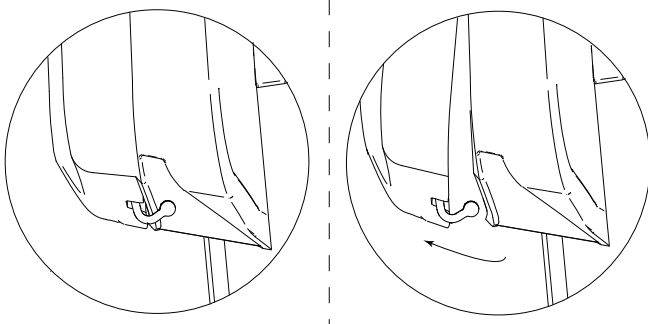


Figure F

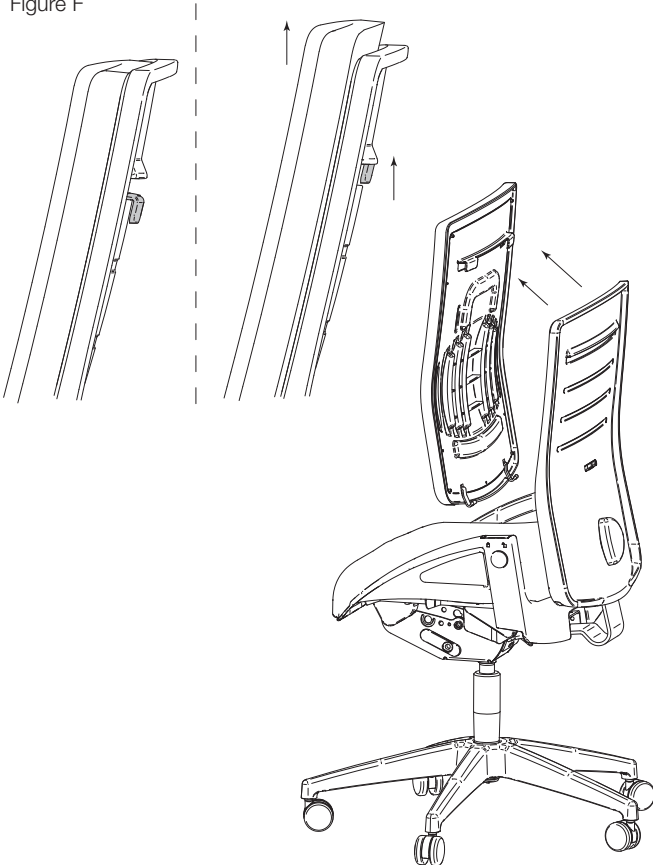


Figure G

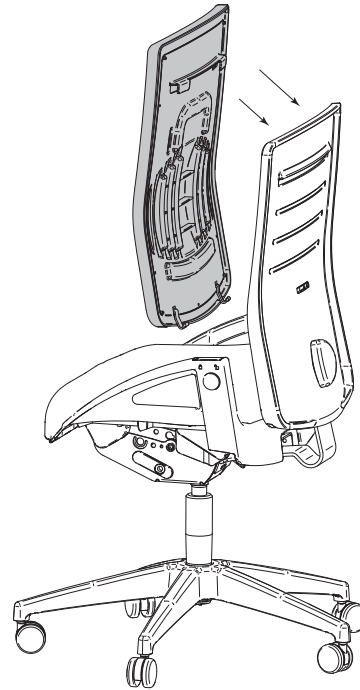


Figure H

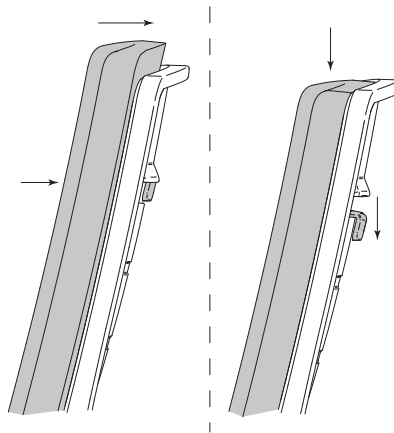


Figure I

