

# Definition<sup>®</sup>

## Operational Return Operational Bridge

### Tools Required

- Tape Measure
- #2 Phillips Head Bit
- Screw Gun
- Level

### Hardware Required

- #10 x 1" Panhead
- #8 x 1¼" Panhead

### Installation

1. Position the main unit in the desired location. Level main unit. Install the drop bracket to the main unit using #10 x 1" panhead screws provided. (Figure A).
2. Align the return or bridge up to the main unit. Position the tops so the outer edge of the main unit and return unit are flush. Align modesty panel of return to end panel of main unit. Fasten the return or bridge top to the drop bracket on the main unit using #10 x 1" panhead screws provided. (Figure B).
3. Align the main unit end panel and the return unit modesty panel to eliminate any crack between them. This can be done by adjusting the levelers up/down on the return or main units. Once the crack is eliminated, attach the main unit to the return unit using the return connecting rail and #8 x 1¼" panhead screws provided. Re-level units. (Figure C).

Figure A

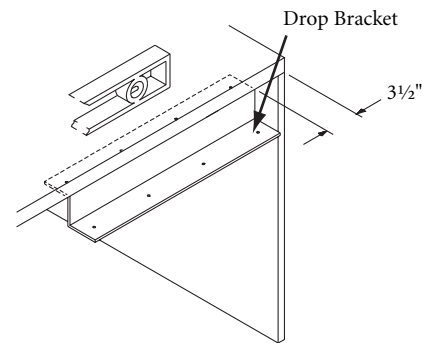


Figure B

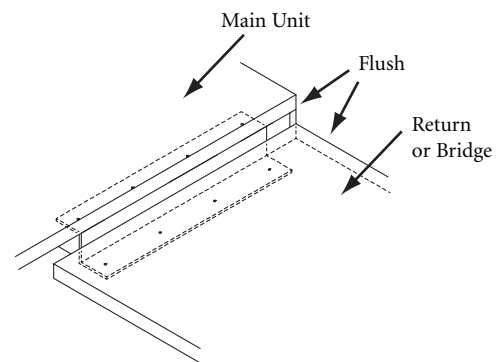


Figure C

