

Contemporary Tables

Table Bases

Tools Required

- Screw Gun
- Phillips Bit
- Tape Measure
- Pencil or Erasable Marker

Package Contents

Panel, Ellipse & Rectangle Bases

- 2x - 3" Glides (El. & Rt.)
- 2x - 1 1/2" Glides (Panel only)
- 12x - #8 x 1" Panhead (El. & Rt.)
- 12x - #10 x 3/4" Panhead (Panel Only)

Cylinder, Square & Slab Bases

- 8x - L-Brackets
- 6x - 1 1/2" Glides (Cyl. bases)
- 8x - #8 x 5/8" Panhead
- 4x - 1 1/2" Glides (Sq. bases)
- 8x - #8 x 1" Panhead
- 2x - 1 1/2" Glides (Slab bases)
- 12x - #10 x 3/4" Panhead (Slab bases)

Installation

Note: These instructions explain basic installation of Cylinder, Soft-square, Square, Panel, Rectangular and Ellipse bases to worksurfaces. For safety purposes, it is recommended that more than one person move worksurfaces and/or assemble tables.

1. For Round or Square one-piece tops, the square wood base or cylinder base mounts in the exact center of the worksurface. (Figure A).
2. Base orientation. (Figure B).
3. For one piece tops see Figure C.
4. For two-piece tops see Figure D.
5. For three-piece tops see Figure E.

Figure A

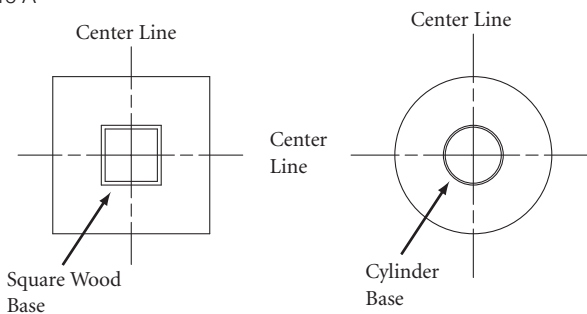


Figure B

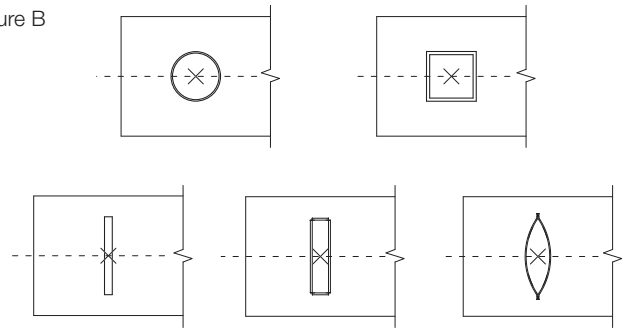


Figure C

One Piece Tops

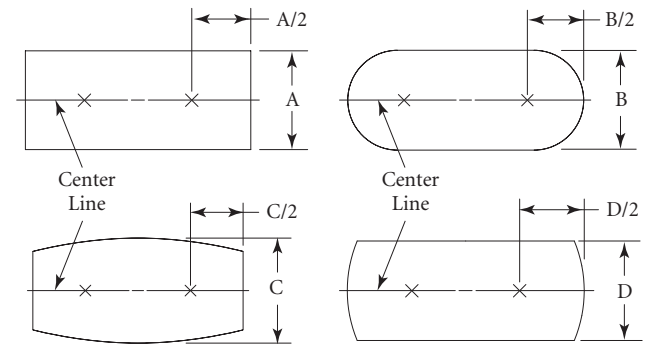


Figure D

Two Piece Tops

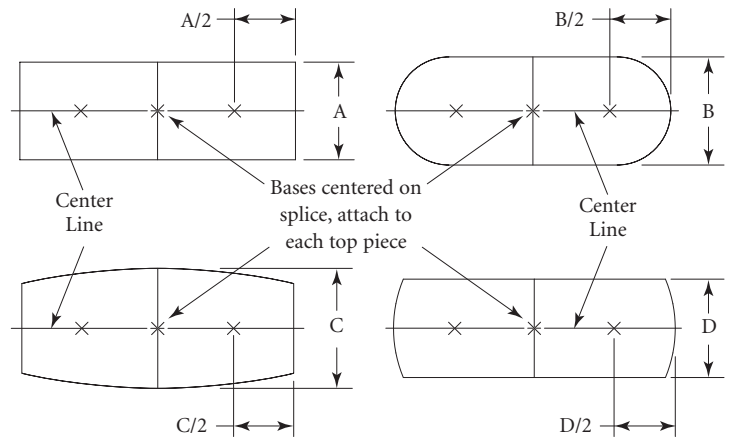
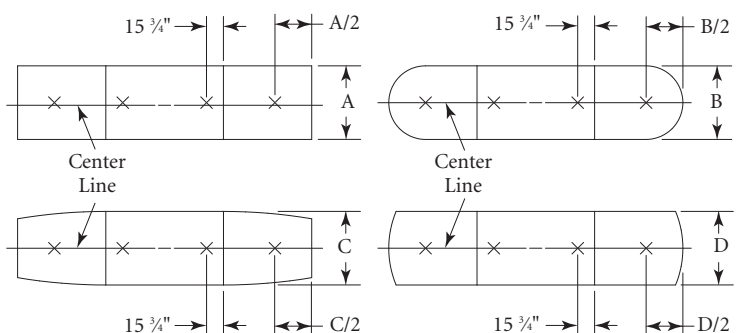


Figure E

Three Piece Tops



Proper product installation, in accordance with these instructions, is the responsibility of the installing agent. If you have any questions concerning these instructions, please call Kimball Office Customer Service.

Kimball® Office

Contemporary Tables

Installation (continued)

- For two-piece tops requiring 4 slab bases, attach a slab base 24 inches from each outer end, and attach a base 12 inches from either side of the center splice. (Figure F).

Note: It is recommended that the edges of flanges be parallel with the edges of the worksurface.

Note: When attaching legs with cable management access holes, make sure legs are turned or positioned for most efficient usage of cable management.

- Attach eight mounting brackets to cylinder or square bases using eight (8) #8 x 5/8" provided screws. Attach cylinder bases to underside of worksurface using eight (8) #8 x 1" provided screws through each hole in the eight top mounting brackets. Tighten screws firmly, but do not over-tighten. Attach glides. (Figures G & H).
- Attach panel bases to underside of worksurface using twelve (12) #10 x 3/4" provided screws through each hole in the top mounting brackets. Tighten screws firmly, but do not over-tighten. Attach glides. (Figures I).

Figure F

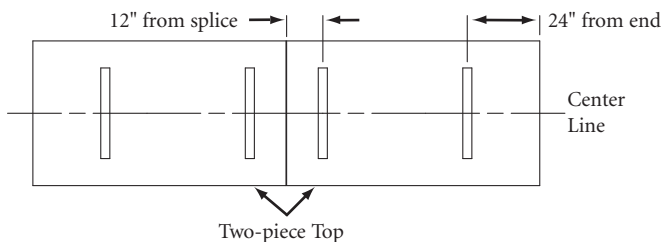


Figure G

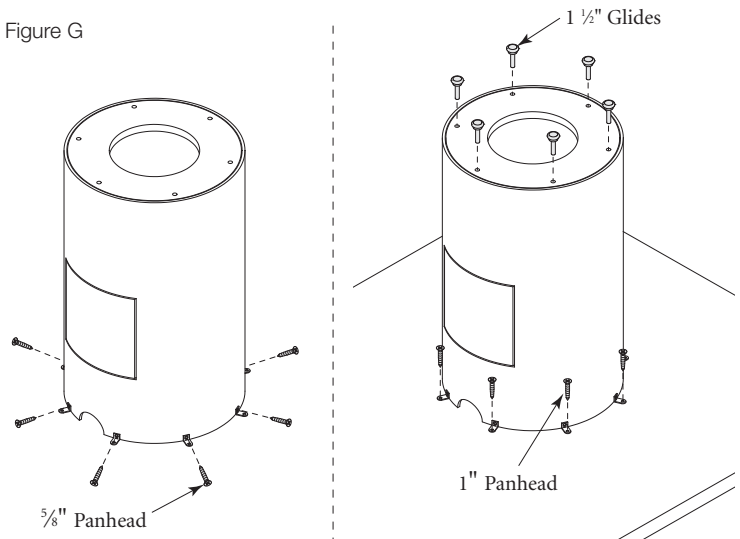


Figure H

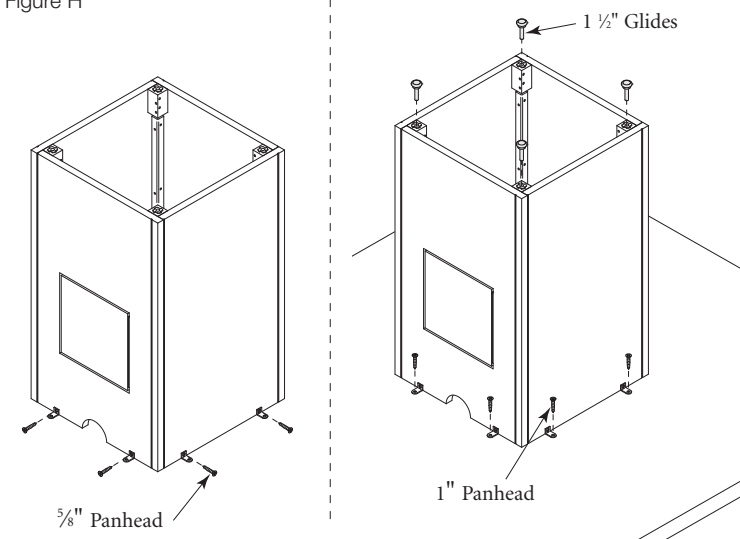
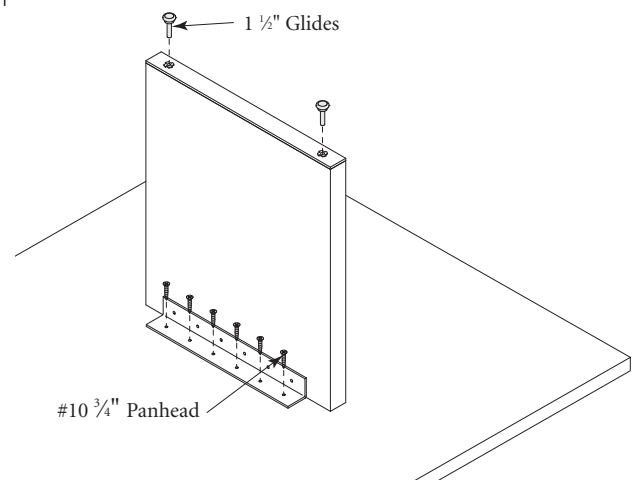


Figure I



Proper product installation, in accordance with these instructions, is the responsibility of the installing agent. If you have any questions concerning these instructions, please call Kimball Office Customer Service.

Kimball[®]Office

Contemporary Tables

Installation (continued)

9. Rectangle panels are attached to leg frame with four clips. Remove panels from leg frame by pulling apart. (Figure J).
10. Attach leg frame to underside of worksurface using twelve (12) #8 x 1" provided screws through each hole in top mounting plates. Tighten screws firmly, but do not over-tighten. Attach glides. *Note: Using allen head wrench or allen head bit with drill works well to attach 3" glides.* (Figures K).
11. Reattach panels to leg frame. Make sure to have an offset between panels when clipping back onto leg frame. Then slide panels together to provide tight fit. (Figure L).

Figure J

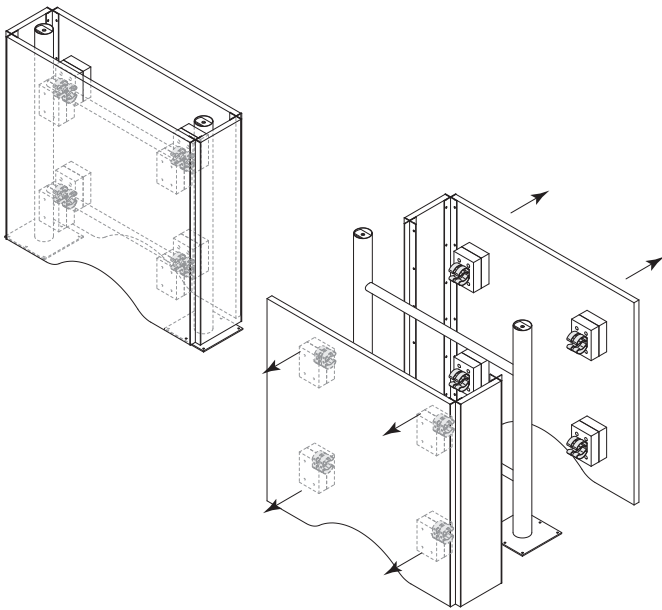


Figure K

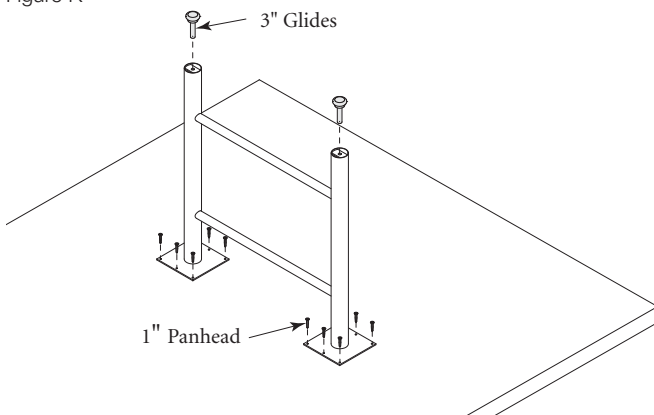
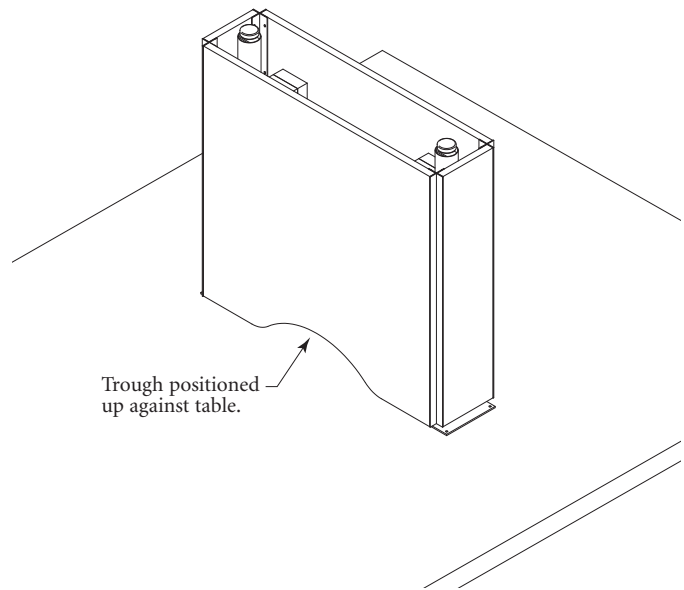
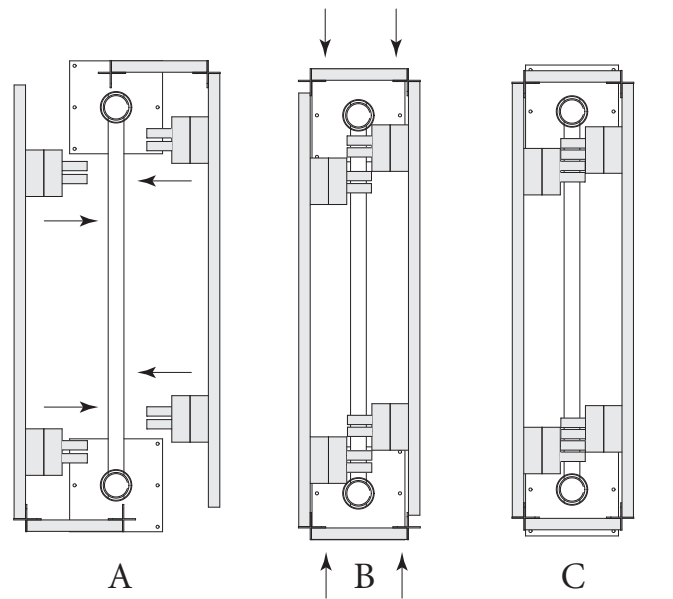


Figure L



Proper product installation, in accordance with these instructions, is the responsibility of the installing agent. If you have any questions concerning these instructions, please call Kimball Office Customer Service.

Kimball[®]Office

Contemporary Tables

Installation (continued)

9. Ellipse panels are attached to leg frame with four clips.
Remove panels from leg frame by pulling apart. (Figure M).
10. Attach leg frame to underside of worksurface using twelve (12) #8 x 1" provided screws through each hole in top mounting plates. Tighten screws firmly, but do not over-tighten. Attach glides. *Note: Using allen head wrench or allen head bit with drill works well to attach 3" glides.* (Figures N).
11. Reattach panels to leg frame. Make sure to have an offset between panels when clipping back onto leg frame. Then slide panels together to provide tight fit. (Figure O).

Figure M

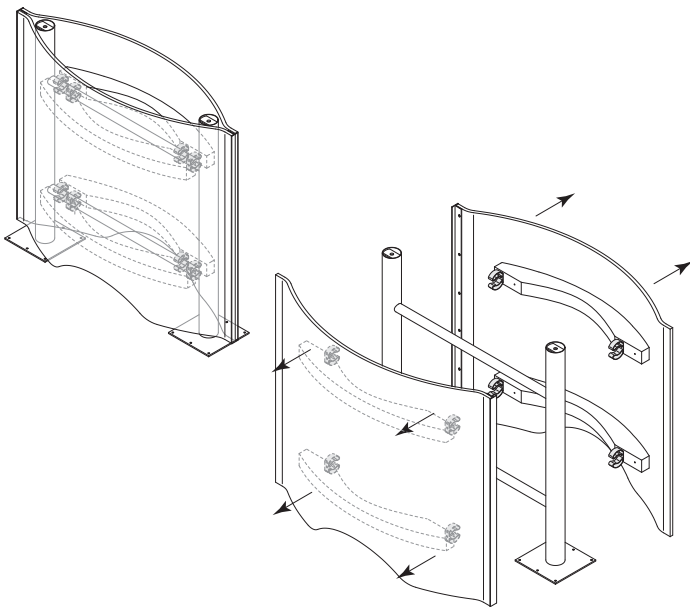


Figure N

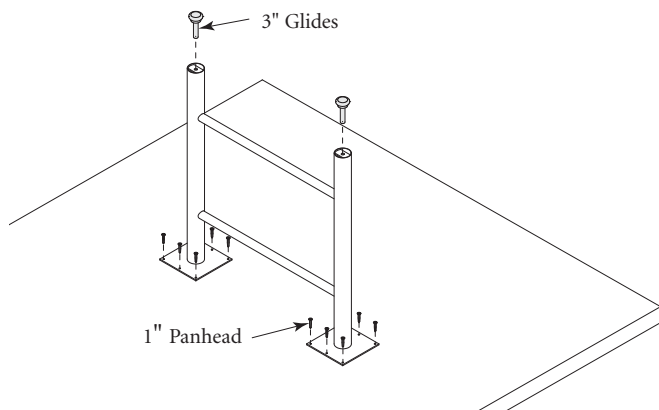


Figure O

