

# Footprint®

## Traxx® Mounted Worksurface

### Tools Required

- Screw Gun with Torque Option
- #2 Phillips Head Bit
- Tape Measure

### Installation

**Note:** Worksurfaces can be Traxx mounted with worksurface brackets (Figure A) and supported with pedestals, end panels, and support bases. (Figure B).

1. Insert hook on the top of the bracket into the Traxx at a 45° angle. (Figure C).
2. Push the top of the bracket downward allowing bracket to hang off of the Traxx. (Figure D).

**Note:** The maximum distance between brackets should be no greater than 48". (Figure E). The maximum span of an unsupported worksurface should not exceed 48" for 1<sup>3</sup>/<sub>16</sub>" worksurfaces and 60" for 1<sup>1</sup>/<sub>16</sub>" worksurfaces. Support is required within 6" of surfaces butted end-to-end. This may be a pedestal or 12" deep support panel.

3. Place worksurface on clean, solid surface, back side facing up. Install the flat brackets on the main worksurface, approximately 2" from front edge and approximately 6" from back edge of the adjoining worksurface using the screws provided. (Figure F). Ensure that the flat bracket attachment does not interfere with other brackets or components. Two flat brackets are required to join surfaces end-to-end or at a right angle.

Figure C

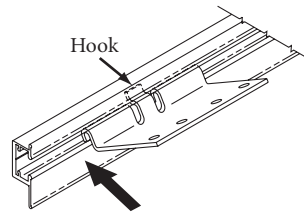


Figure D

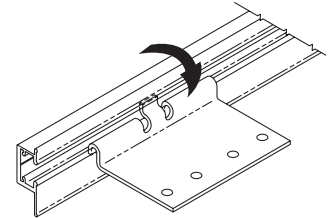


Figure E

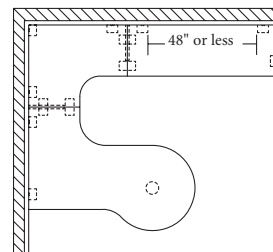


Figure F

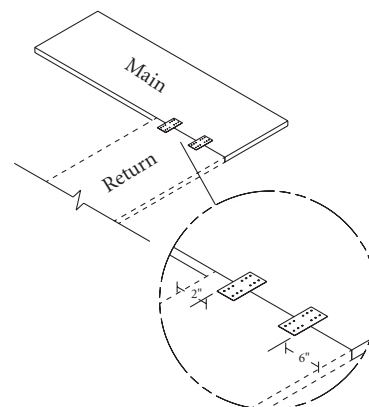


Figure A

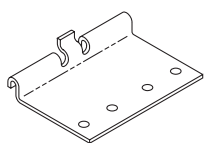
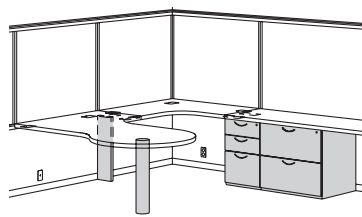


Figure B



Proper product installation, in accordance with these instructions, is the responsibility of the installing agent. If you have any questions concerning these instructions, please call Kimball Office Customer Service.

Kimball®Office

# Footprint

## Installation (continued)

4. Lay the worksurface on the brackets. (Figure G).

**Tip:** Use an undersurface component as additional support until the worksurface bracket is secured to the surface.

5. Lay return worksurface onto brackets.

**Note:** When attaching two surfaces at a right angle, there will be a  $\frac{1}{8}$ " gap between the wire manager and Traxx. (Figure H). If there is no wire manager, the surfaces should align. (Figure I).

6. Attach return worksurface to the flat brackets with screws provided. (Figure J). Eight screws are required per bracket.
7. Beginning at one end of the worksurface layout, apply pressure to the front of the ganged worksurfaces while controlling the gaps between the Traxx and back of worksurface.
8. Attach the worksurfaces to the worksurface brackets using the screws provided. (Figure K). A minimum of three screws are required per bracket.

Figure G

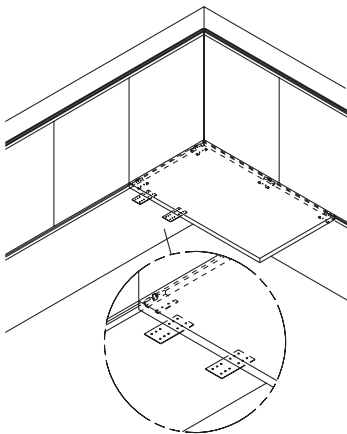


Figure H

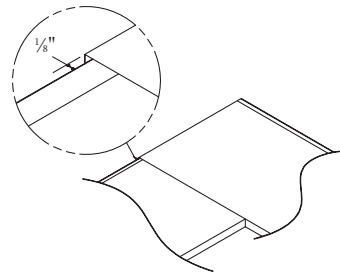


Figure I

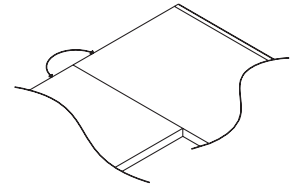


Figure J

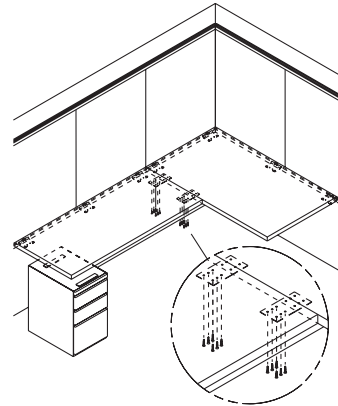


Figure K

