

# Footprint® Worksurface & Support

## Adjustable Base

### Tools Required

- Phillips Screwdriver
- 5/8" Open End Wrench

### Package Contents

- 1 Adjustable Base
- 4 Locking Casters
- 4 Caster Stems
- 8 Top Mounting Screws

### Installation

**Note:** Quarter-round table top shown for illustration.

1. The Adjustable Base consists of the base itself, and four (4) locking casters with stems. (Figure A).
2. Place the base upside down on a smooth, hard surface. Screw a caster stem into each base leg. Tighten each caster stem securely with 5/8" open end wrench. Push caster firmly onto each caster stem until it snaps into place. (Figure B).

Figure A

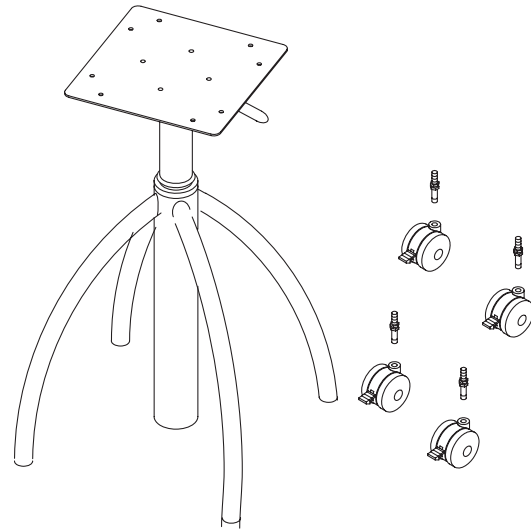
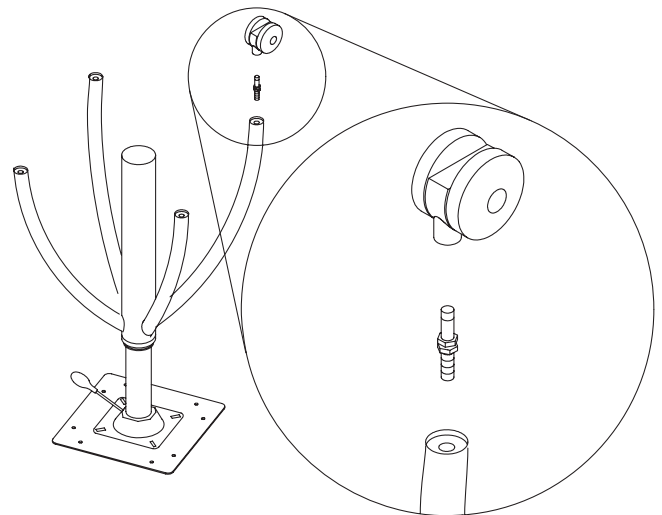


Figure B



# Footprint Worksurface & Support

## Installation (continued)

3. Place the table top face down on a smooth, hard surface. Take care that the worksurface does not get marred. Place the base assembly on the table top, aligning the holes in the base mounting bracket with the pre-drilled holes in the table top. Attach the base to the table top with the mounting screws provided. (Figure C).
4. Carefully turn entire assembly upright. (Figure D).

Figure C

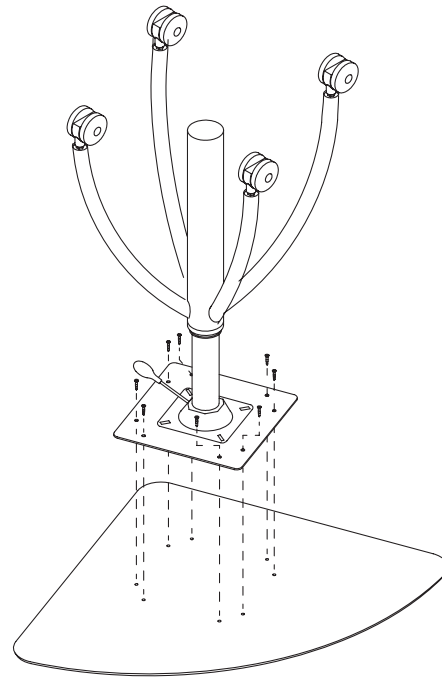


Figure D

