



Kimball® Office

DELANO™

cover: One Seat Lounge, Two Seat Lounge, 24x24 table; finish: Espresso Walnut; seat & back fabric: Showcase Cream;
bolster fabric: Maharam Millerstripe; below: One Seat Lounge; finish: Caramel Maple; seat & back fabric: Davenport Carmel;
bolster fabric: Pollack Puff Daddy ice-t

DELANO™

A new attitude

Make a statement without saying a word. With its sculpted lines and harmony of materials, the Delano Collection reflects your company's individual image and culture. Each piece is a form of expression, yet infinitely responsive; leaving everyone—guests and employees—feeling well taken care of.

The Designer

David Allan Pessa exemplifies restraint, thriving on the challenge of successfully “arriving at more with less.”

“The destination,” he says, “is simply a result of the journey, and it is the journey that evokes the greatest challenge and emotional charge in me.”

David has been designing award-winning products since 1987, when he graduated from Rochester Institute of Technology. He fuels his design journey and sparks his creativity with a protean knowledge of the latest thought shifts and trends in architecture, materials and processes, politics, people, fashion, music and travel.

He is the managing principal at New Studio, LLC in South Florida.

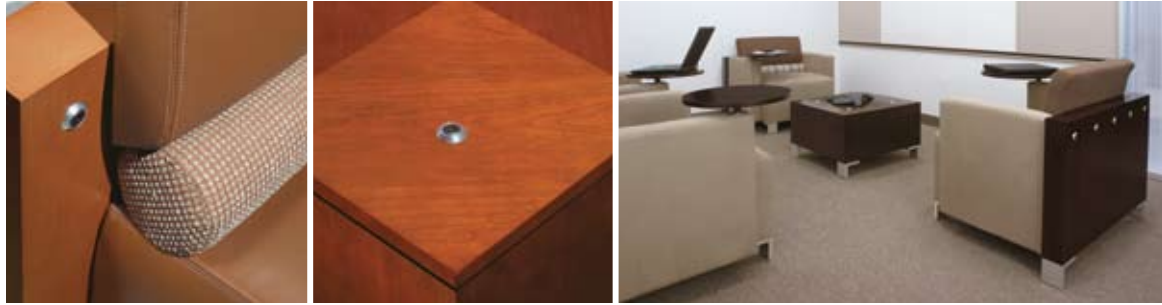


EQ Credit 4.5
Low-emitting furniture:
SCS Certified (Scientific Certification Systems)



the BIFMA sustainability standard





The diamond-matched veneer and polished aluminum fastener blend impeccable craftsmanship with a modern approach to form.

- Expansive wood “walls” frame monoslabic profiles for a pure architectural form.
- Tightly tailored bolsters and seat cushions lend calm to the structure.
- Gently curved backrests give supportive comfort.
- Coordinating tables present a squared-away simplicity with their clean, geometric composition.
- Rich wood finishes and meticulously matched veneers, textured fabrics, and polished aluminum accents project a cosmopolitan aesthetic.

left: bolster finish: Caramel Maple; seat and back fabric: Davenport Carmel; bolster fabric: Pollack Puff Daddy ice-t;
center: Amber Cherry
right: One Seat Lounges with tablet arms, Mocha finish; seats and arms: Cachet Mudpack
back: Cachet Mink; shown with Traxx and tiles

DELANO™

A new horizon

Each piece gracefully complements a variety of public settings, including lobbies, informal meeting areas, high-profile community spaces, hospitality interiors, educational and healthcare settings and stadium suites.

Designed by David Allan Pessa, the Delano Collection has an architectural appeal that projects a sense of confidence anchored by order.

- Tablet arms and storage tables increase the collection's design possibilities for study areas and other productive casual spaces.
- Tandem components join seating and tables in-line for a space-defining arrangement that's always neat.
- Tandem tables help create teaming and breakout work areas around conversation-encouraging lounge configurations.





2-One Seat Lounges with Tablet Arms, 2-One Seat Lounges with Tandem Storage Table, 24x48 Table; finish: Cordovan Walnut; seat & back fabric: Davenport Black; bolster fabric: Shenanigans Caper

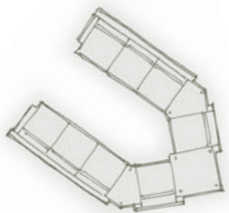
DELANO™



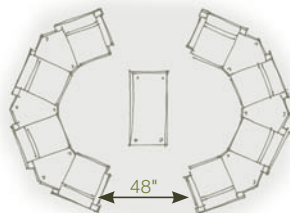
A new perspective

Purposefully designed using diverse materials and configurable components, the Delano collection has the versatility and resilience to meet the demands of public waiting areas and high-traffic commercial environments.

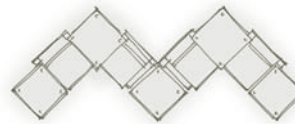
- Modular arms, tables, and tablet arms make Delano easy to configure and grow. Options include armchairs, sofas and benches in double and triple widths, tables, and an ottoman.
- Polished aluminum fasteners accentuate and connect—joining arms to backs, seats to tables, and tablet arms when needed.
- Colors and fabrics can be mixed and matched on seats, bolsters and backs to create one-of-a-kind looks.
- Book-matched veneers ensure beautifully consistent wood grain patterns.
- Satin wood finishes are formulated and guaranteed for a lifetime of exceptional color clarity and durability.



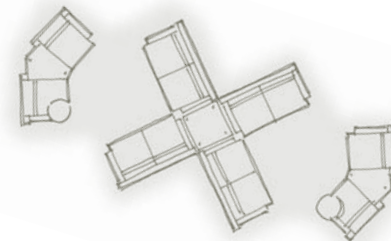
156" x 96"
 2-Three Seat Lounges
 2-One Seat Lounges
 2-45° Tandem Tables
 1-90° Tandem Table



198" x 138"
 8-One Seat Lounges
 6-45° Tandem Tables
 1-24x48 Cocktail Table

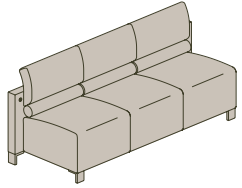


196" x 77"
 4-One Seat Lounges
 3-24x24 Tables
 2-90° Tandem Tables

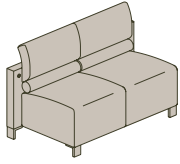


238" x 114"
 4-Two Seat Lounges
 2-One Seat Lounges with Tablet Arms
 2-One Seat Lounges
 2-45° Tandem Tables
 1-24x24 Cocktail Table

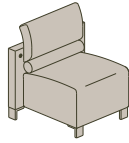
armless



K90CC
Three Seat without Arms
80x27½x33

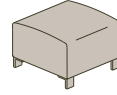


K90BB
Two Seat without Arms
56x27½x33



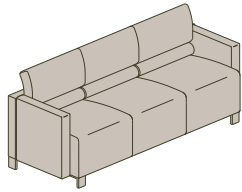
K90AA
One Seat without Arms
32x27½x33

ottomans

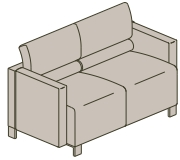


K90AC
Ottoman
24x24x18

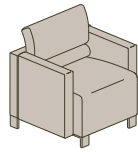
with arms



K90HH
Three Seat with Arms
80x27½x33

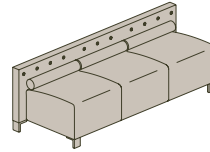


K90EE
Two Seat with Arms
56x27½x33

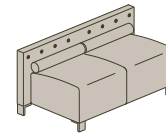


K90DD
One Seat with Arms
32x27½x33

benches

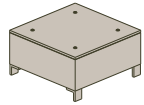


K90KK
Three Seat Bench
80x27½x25

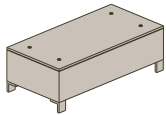


K90JJ
Two Seat Bench
56x27½x25

freestanding tables

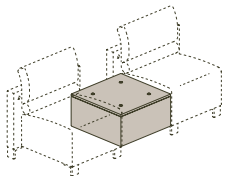


K90CE
Cocktail Table
30x30x16

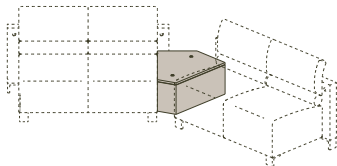


K90DH
Cocktail Table
48x24x16

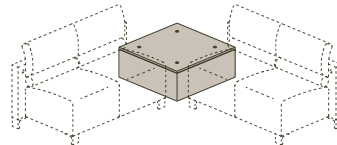
tandem tables



K90PS
Tandem Table
24x24x16



K90MR
45° Tandem Table



K90KP
90° Tandem Table



Kimball[®]Office
www.kimballoffice.com

A unit of Kimball International
1600 Royal Street, Jasper, Indiana 47549
800.482.1818

EBRDEL ver. 09