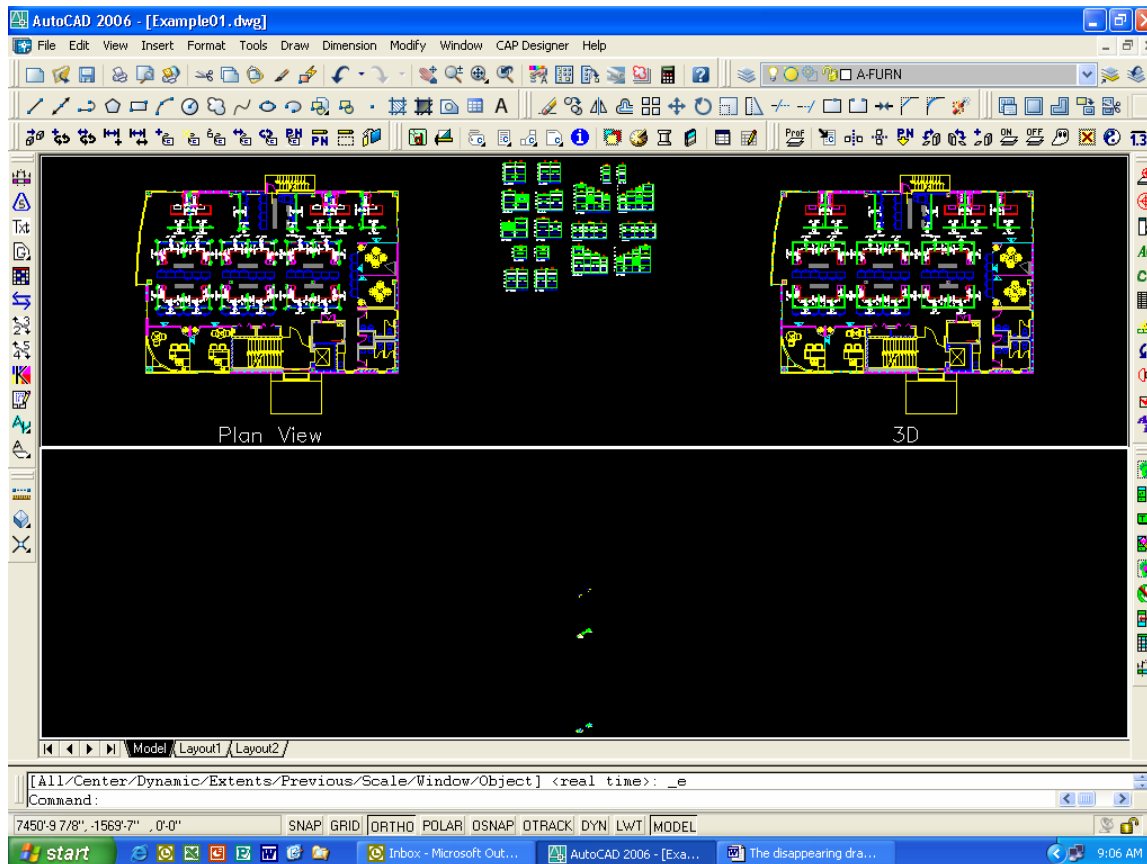


# The disappearing drawing?

Have you ever worked on a drawing, performed the CAP routine “Copy Plan to 3D” and then when you view it in an isometric view it disappears? Well, in most cases it really hasn’t disappeared. You are just looking at it from such a far away distance that the symbols only look like dots on your screen. The example drawing below shows a top view in the upper portion of the screen and an isometric view in the lower portion.



When you change from one view (top view) to another view (SW isometric view) AutoCAD zooms to the extents of the drawing. In our example above, there are several items that have a Z coordinate at such a large number that it must step way back in order to fit everything on the screen. This number can be either a positive or negative number.

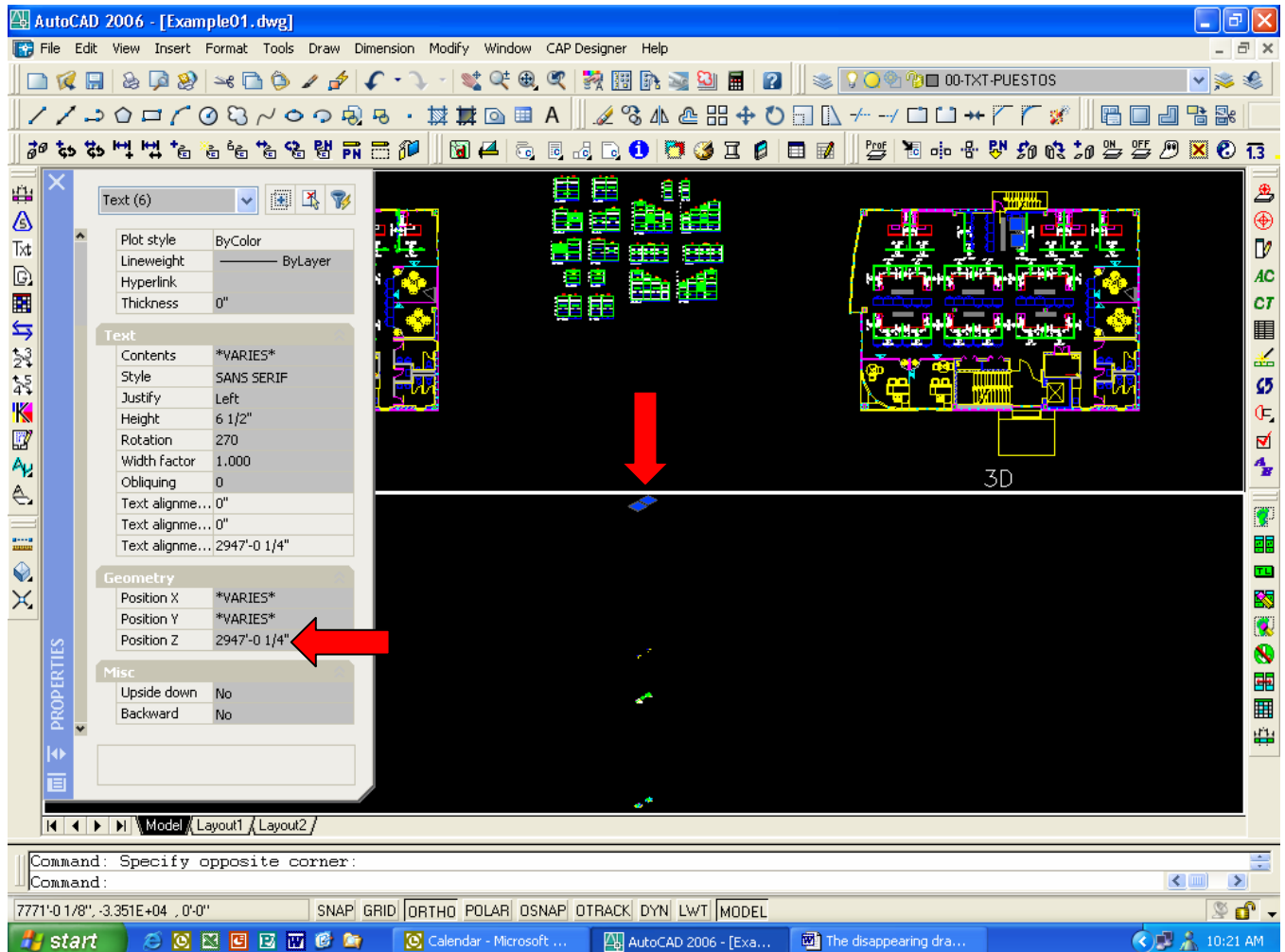
I do not know how or why this happen but I do know that it can be fixed. Here are the steps that I took to get this isometric back to a usable view.

## Step 1

- Open the AutoCAD Properties window.
- Select the items across the top of the isometric area. I used a standard AutoCAD crossing window which selected 6 items (strings of text). These items show as a blue grip or square on my screen.
- Check the properties on the selected items. Under the Geometry area all 6 items have a Z position of 2,947' (see image at the top of the next page). I changed this to zero by simply typing over it.
- Move my cursor back into the drawing area and press the ESC key to release the 6 items. Watch for the blue grips to disappear.
- Perform Zoom Extents.

# The disappearing drawing?

Kimball®Office



## Step 2

- Select the items across the top of the screen. This time when I used the crossing window it selected 28 items, but because they have different properties there is no Geometry area or Z position to change. Press the ESC key to release the 28 items.
- Use a standard AutoCAD pick selection (left mouse click) and select one item. The Z position on this item is 680' and needs to be changed to 0. Select and change each item separately. Remember, I need to move my cursor into the drawing area and press the ESC key to release the item changed before selecting the next one. Here is what I had to change:
  - (14) Strings of text – changed Z position under Geometry from 680' to 0 (zero).
  - (12) Blocks – changed Z position under Geometry from 680' to 0 (zero).
  - (2) Polylines – changed Elevation under Geometry from 680' to 0 (zero).
- Perform Zoom Extents.

# The disappearing drawing?

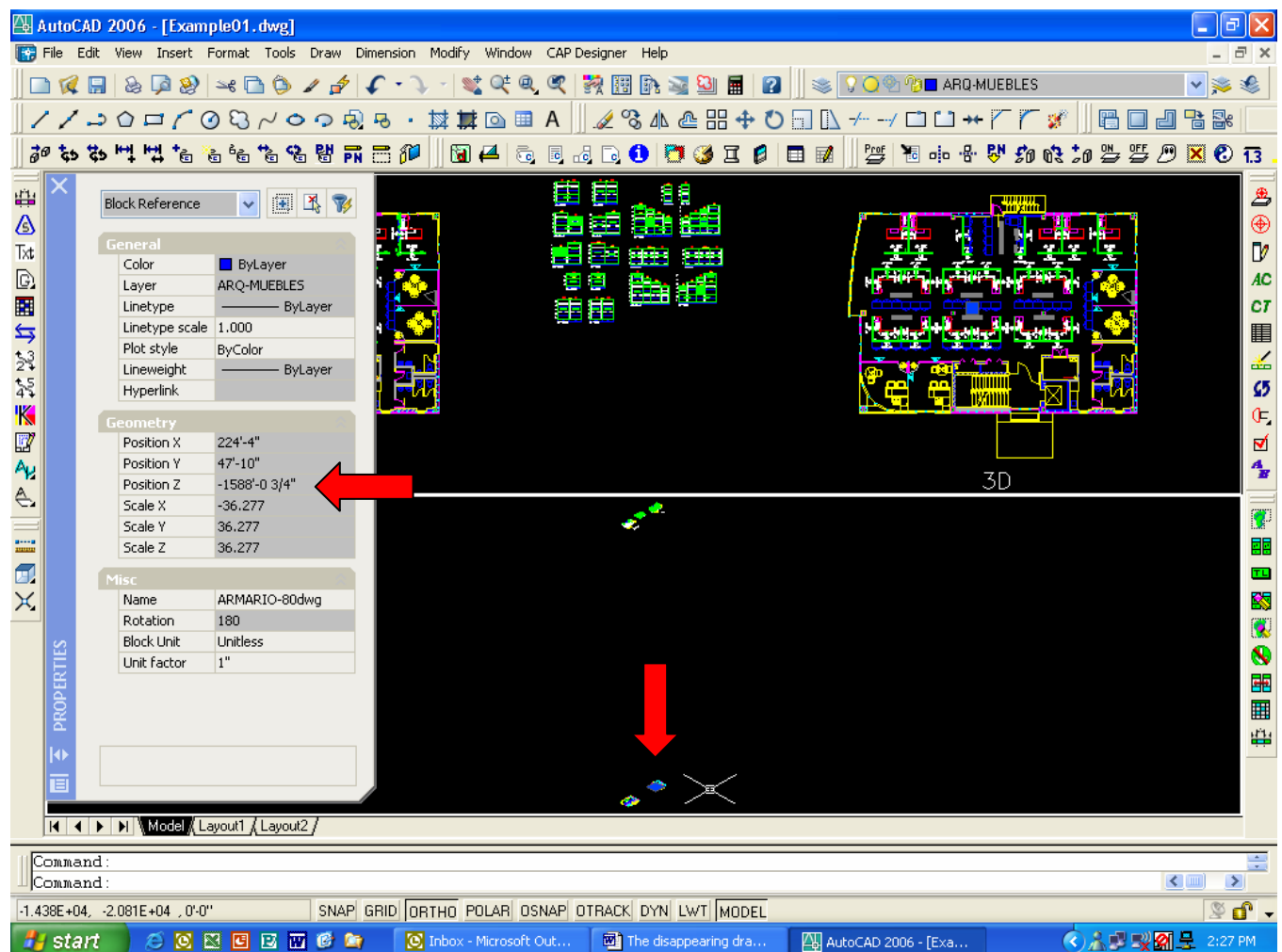
Kimball®Office

## Step 3

- Select the items across the top of the screen again. This time when I use the crossing window it selects 1,438 items and no Z position to check. Press the ESC key to release these items.
- Using the standard pick selection, I select one item. The Z position on this item is 0 (zero), therefore I believe that these items are located correctly and I will leave them alone.

## Step 4

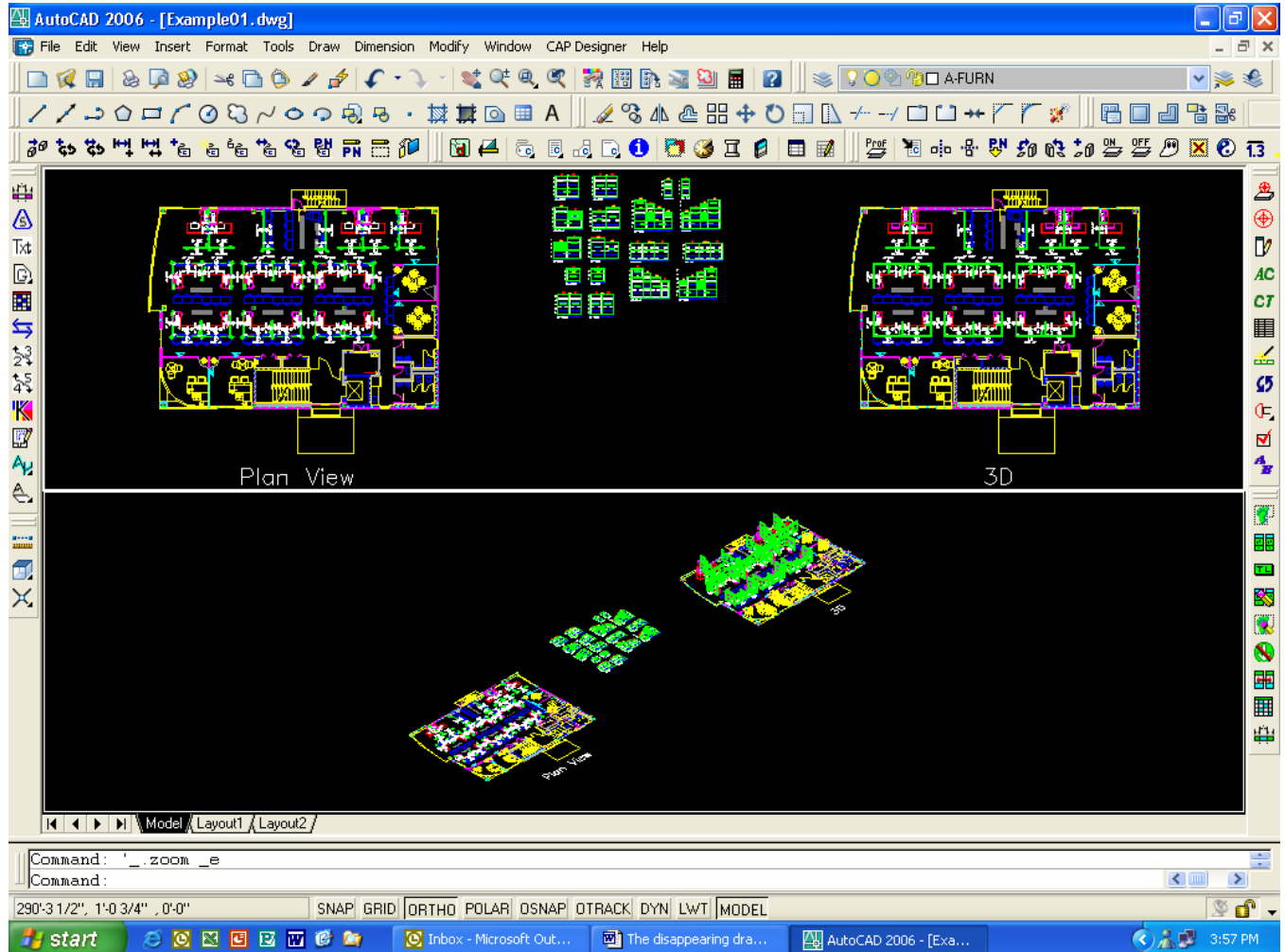
- Select the items across the bottom of the screen. This time when I use the crossing window it selects 3,151 items and no Z position to check. Press the ESC key to release these items.
- Using the standard pick selection, I select one item. The Z position on this item is -1,588'. Rather than changing the properties on 3,151 items, I use the Move command and move all the items back up by entering a second point of @0,0,1588'.
- Perform Zoom Extents.



# The disappearing drawing?

Kimball®Office

Here is what the drawing looks like now. The isometric is a more usable view.



This disappearing drawing issue seems to be happening a little more often. As I stated early, I am not sure how or why it happens but I do know that in most cases it can be fixed. I choose this drawing as an example because it required several different ways to get everything back to zero. I have received drawings that require more work than this one, but also I have received drawings that require less. I hope the next time that it happens to you, you will be a little more prepared and will be able to fix it with the help I have given you. If not, send it to me and I will take a look at it.