

Interworks EQ in CAP

Kimball®Office

The intent of this document is to help you, the CAP user, get started with the Interworks EQ product within the 20-20 CAP Designer software. It does not cover every item or possible configuration. Please review the Systems price list for additional information on the Interworks EQ offering.

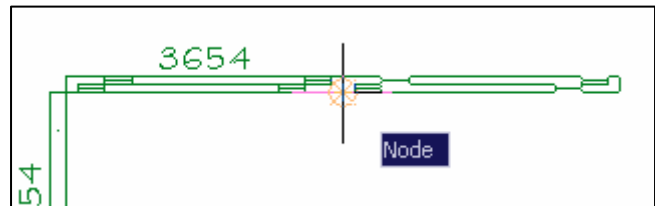
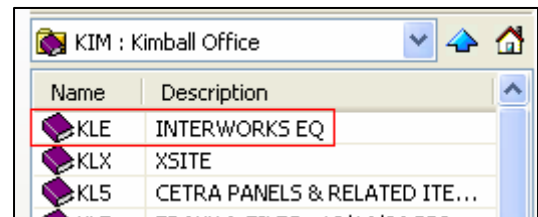
Also, an important note concerning the 20-20 software; all of the automation and functionality is designed to be a valuable productivity tool. These tools do not necessarily perform every rule check and design option you may encounter. Neither 20-20 Technologies nor Kimball Office is responsible for errors or omissions. Be sure to review and check your drawings and specifications for content and accuracy, as well as to insure that you get your desired results.

Getting started

The Interworks EQ product was introduced and available to order on February 26, 2007. Within CAP, under the Kimball Office heading it has a catalog code of **KLE**.

Panel symbols must be placed and snapped together correctly to insure that the Auto Hardware routine can place the appropriate finish channels and trim pieces. Before you get started check your **OSNAP** settings. For most panel types the only selection required is **Node**.

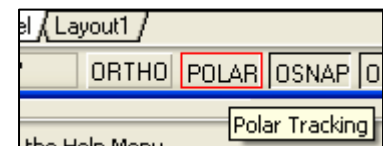
The insertion point for panel symbols is the lower left corner. Placing them in a clockwise rotation is a good routine to get into. This helps with the neatness of your drawing by aligning the symbol text.



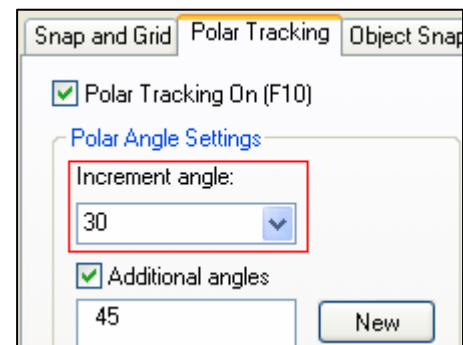
To help with the proper rotation **ORTHO** mode is very useful. Enabling Ortho Mode with a single left mouse click will allow you to rotate the symbols on 90 degree intervals just by moving your mouse around the drawing area.



A recent addition to the Interworks EQ product line is the trim pieces required for 120 degree panel configurations. Both 2-way & 3-way same height panel layouts can now be accomplished. To help get the panel symbols properly rotated for these configurations you should switch to **POLAR** (Polar Tracking) mode with a single left mouse click.



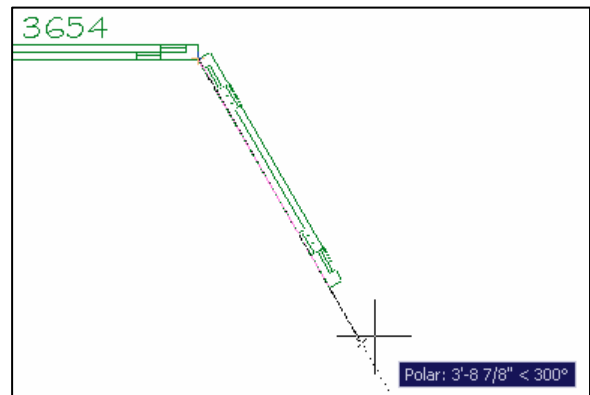
If this is your first time using this feature you will need to go into the Polar Tracking settings by using a single right mouse click on **POLAR** and then select **Settings**. This will open a Drafting Settings window. Select the **Polar Tracking** tab and use the drop down window to set the Increment angle to **30**. Then select the **OK** button.



Interworks EQ in CAP

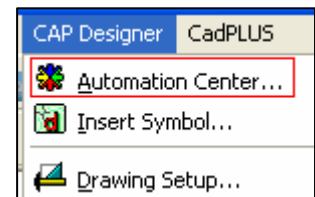
Kimball®Office

Now when it comes time to rotate the next panel into place you should notice a difference. The dynamic input on the end of your cursor will display any angle that is an increment of 30 (i.e. 30, 60, 90, 120...). Use the polar tracking to create your 120 degree configurations. It may take a little time and practice to get use to, but once you get the hang of it, it becomes a useful tool.

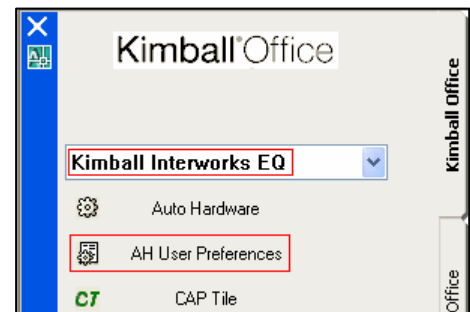


User Preferences

After you have placed the panels and before you run the Auto Hardware routine you should check the User Preferences settings. To do this you must have your Automation Tools palette open. This can be done by selecting **Automation Center** from the CAP Designer pull-down menu.

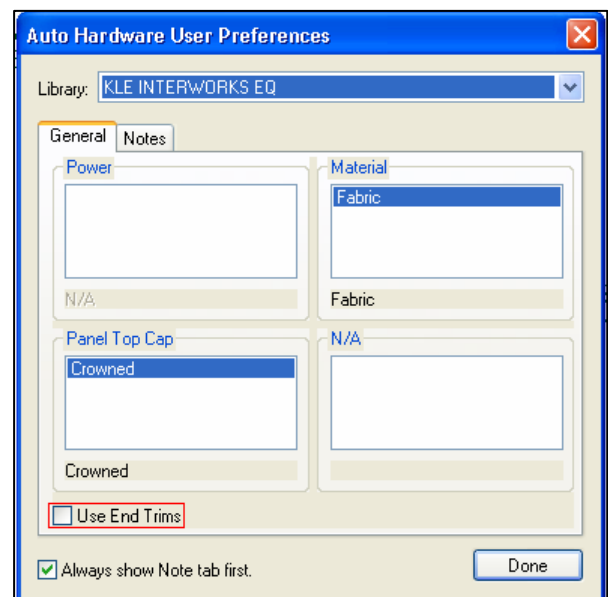


Within the Automation Tools palette, select **Kimball Interworks EQ** from the pull-down area. Then select **AH User Preferences**. There are two tabs for the Interworks EQ panels; **General** and **Notes**.



General tab – Currently in this area the only setting that you can change is related to full end trims. If they are required in your layout place a check in the box **Use End Trims** (lower left corner). If you require the use of side rail end caps and wire way end caps, leave the box blank.

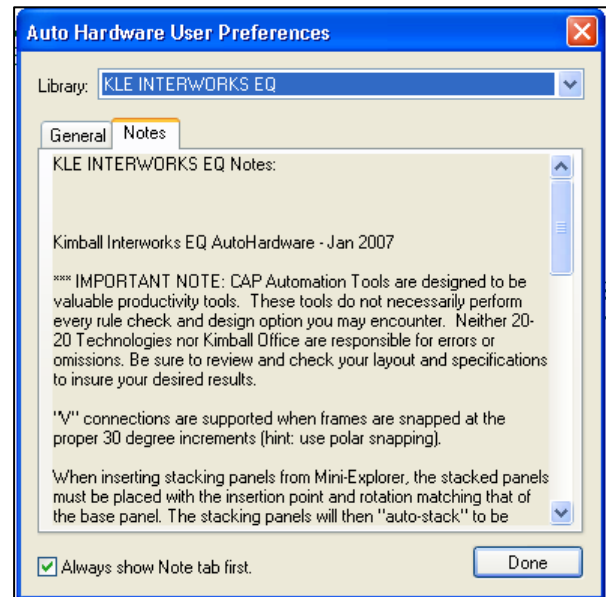
One additional note about full end trims, they are required when stackable panels are used and will be placed even if there is no check placed in the **Use End Trims** box.



Interworks EQ in CAP

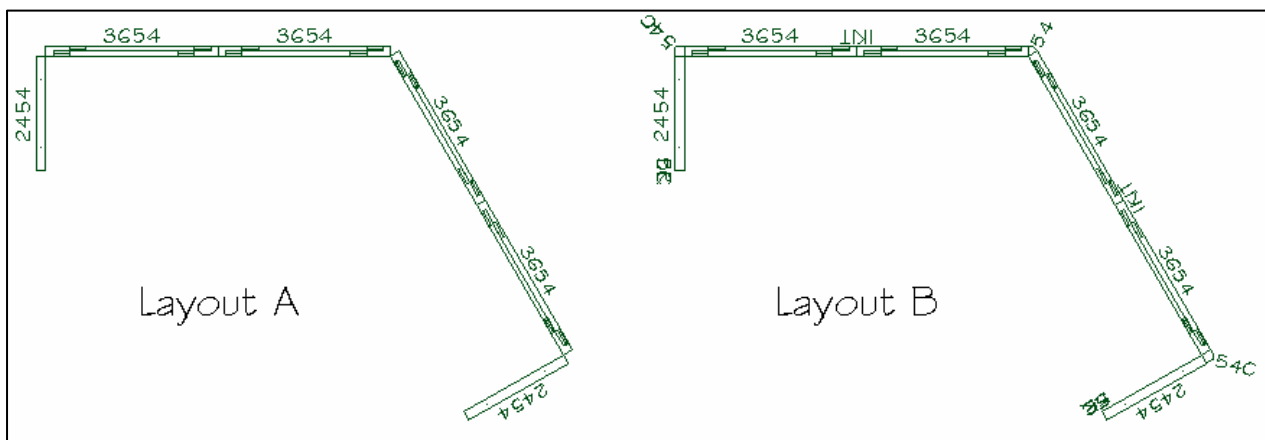
Kimball®Office

Notes tab – Important information pertaining to the Interworks EQ product and the CAP automation is listed here. Please read through this information carefully. You should also periodically check back for any updated information.



Auto Hardware

This routine will add finish channels and the appropriate trim to your panel layout. In Layout A shown below you can see a panel configuration before the Auto Hardware routine has been run. Layout B shows the same configuration but after the routine was run (**Use End Trim** was not selected).



The **Auto Hardware** routine can be found and should be run by selecting it from the **Automation Tools** palette. Please be sure to have **Kimball Interworks EQ** selected in the drop down area at the top of this palette.

When you run this routine it is important that you select all panels that come in contact with one another. The best way to do this is with the use of a standard AutoCAD crossing window.

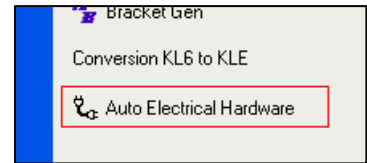


Interworks EQ in CAP

Kimball®Office

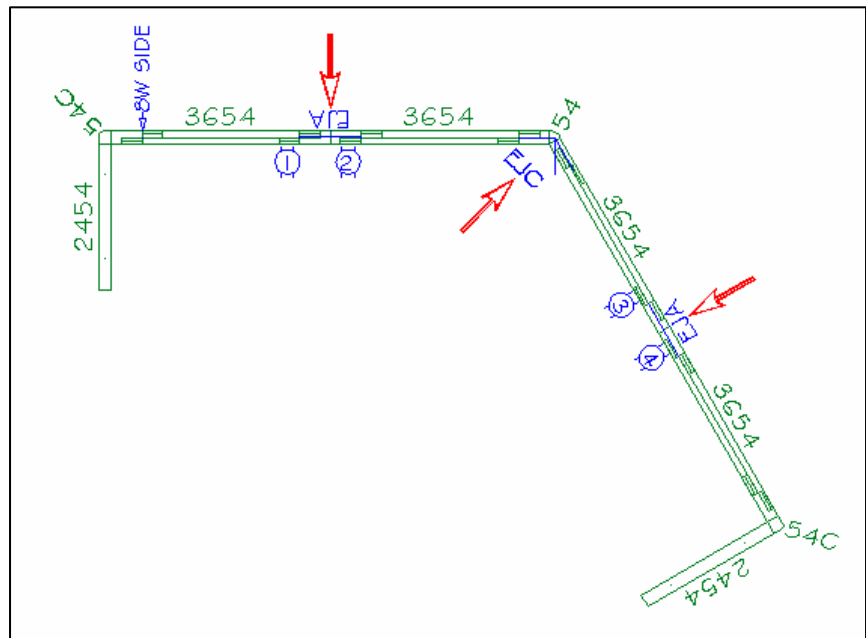
Auto Electrical Hardware

This new feature was created to assist you with the placement of electrical jumper cables between powered panels. The routine will place the following panel-to-panel jumpers; adjacent (10PEJA), bridge (10PEJB) and corner (10PEJC). It can be found on the Automation Tools palette and the use of a standard AutoCAD crossing window works well to select the required panels.



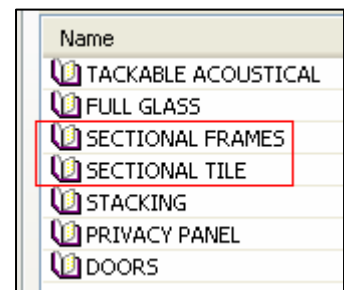
After you have run the routine you should notice the symbols for these jumpers have been added to your layout. In the layout to the right; 2 panel-to-panel adjacent jumpers (**EJA**) and 1 panel-to-panel corner jumper (**EJC**) were added by the routine.

I manually added the power in-feed and duplexes.

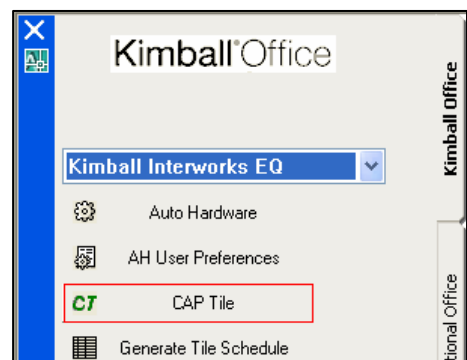


Sectional Frames & Tiles

Another new addition to the Interworks EQ panel offering is sectional frames and tiles. The correct way to apply the tiles to the frames is with the use of the CAP Tile routine.



To get started, select and place a sectional frame symbol in your drawing. Select **CAP Tile** from the Automation Tools palette. Please be aware that your drawing file must be saved, if it is not you will be prompted to do so. After selecting a frame the window below will appear.

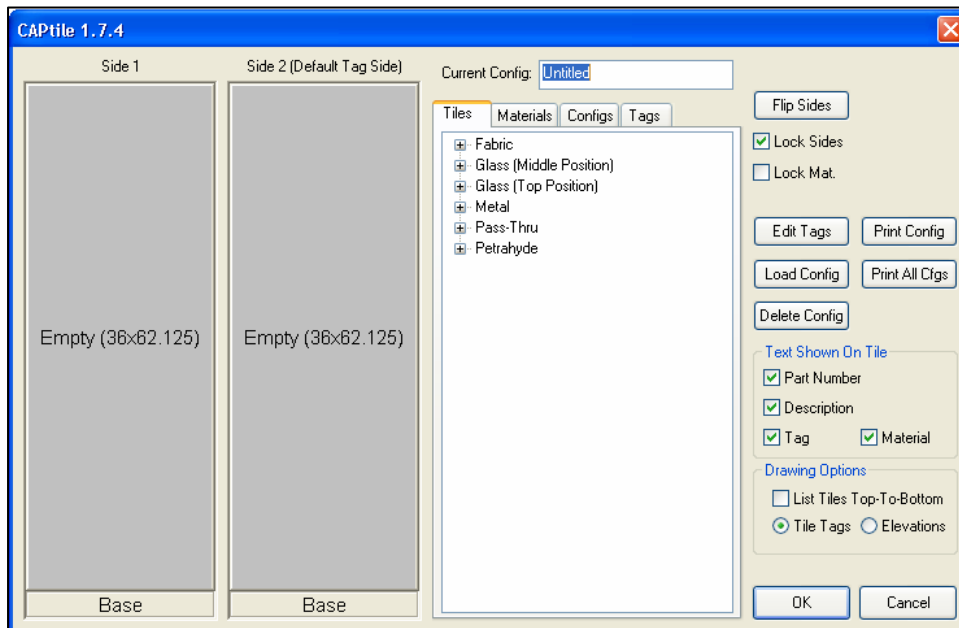


Interworks EQ in CAP

In this window you will find the associate tiles under the **Tiles** tab. Use the drag and drop routine to place them onto the empty sides of the frame. You will need to work from the bottom of the frame to the top. Please see page 243 of our Systems price list for proper tile placement.

The **Materials** tab allows you to drag and drop finishes onto tiles.

The **Configs** tab will give you access to any saved tile configurations.

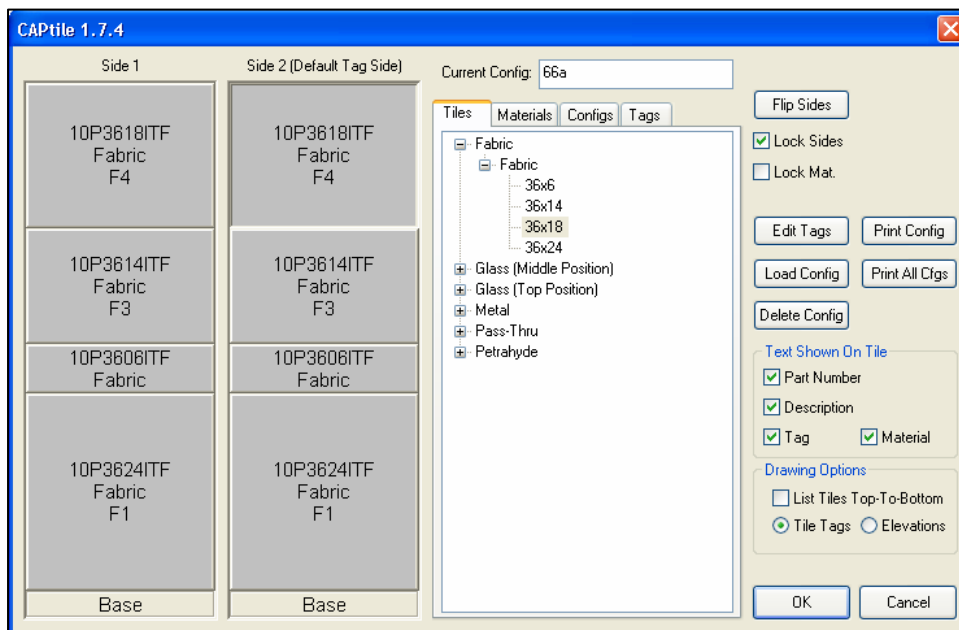


The **Tags** tab gives you access to tiles that have already been assigned in other configurations.

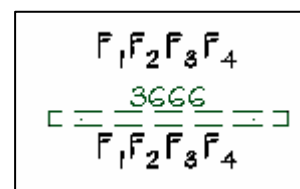
Here is an example of a 66" high sectional frame that has fabric tiles placed in all positions on both sides.

Notice that a tag is assigned to each tile as it is placed. **F1** was assigned to the first fabric tile placed.

Next, you will need to name this configuration and include it in the **Current Config:** area at the top.



Now, select the **OK** button at the bottom of this window and then select either a single frame or multiple frames within your drawing. CAP Tile is only concerned with the height of a frame. Your configurations can be applied to the same height frame regardless of the width. The image to the right shows the frame and the tile tags from the configuration that has been assigned to it. This is one way to show the sectional frames and tiles.

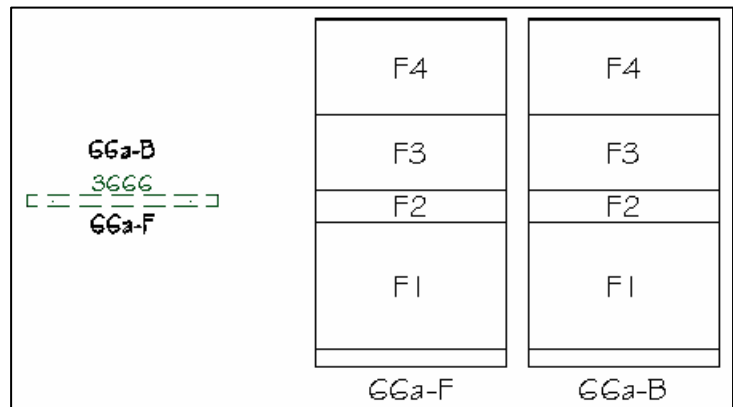


Interworks EQ in CAP

Another way to view the frame and the tiles assigned to them would be in elevation view. Start the CAP Tile routine again and select the frame that has tiles assigned to it. After the window opens, select **Elevations** in the **Drawing Options** area and then select **OK**.



The tags will be removed from the frame and replaced with the configuration name. Also included will be a **-F** and **-B** to represent the front side and back side. You will be prompted for an insertion point for the elevation graphic.



Another helpful item to include in your drawing is a tile schedule. Use the **General Tile Schedule** selection to add one to your drawing. If you had assigned finishes to your tiles those finishes would be included in the **Finish** column of the schedule.

KLE INTERWORKS EQ

Tag	Type	Finish	Height
F ₁	Fabric		24
F ₂	Fabric		6
F ₃	Fabric		14
F ₄	Fabric		18.125

* Tile Tags on the Floorplan are Listed Bottom to Top

If you need to remove the assigned tiles from a frame, type **cleanframe** on your command line and then select the frame you wish to clean.

Please be aware that the CAP Tile routine creates a file that contains your tile configuration names and the tiles associated with them. This file resides in the same folder as your drawing file and will start with the same name but will include **-tilecfg.xml** (i.e. **same_name-tilecfg.xml**). If you give your drawing to someone, be sure to give them this file as well.

Please reference your **CAP Studio Reference/Training Manual** for additional information on the CAP Tile routine.

Interworks EQ in CAP

Kimball®Office

Stackable Panels

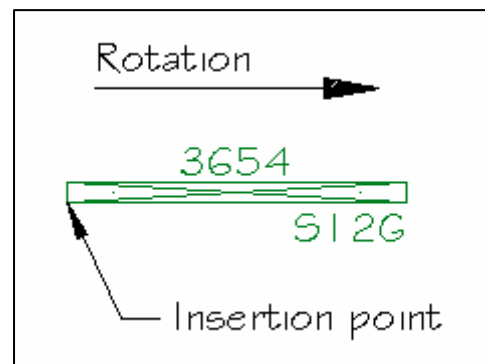
Stackable panels are also a new addition to this offering. The proper placement of these symbols is important. It will help insure that the Auto Hardware routine can place the appropriate trim pieces and when you generate 3D's the stacking units are in their correct height location.

Place your base panel first and then using the same insertion point and rotation, place the stacking unit second.

Name
TACKABLE ACOUSTICAL
FULL GLASS
SECTIONAL FRAMES
SECTIONAL TILE
STACKING
PRIVACY PANEL
DOORS

Here are a few important notes to be aware of when you work with stackable panels:

- **One or two stackable panels may be stacked onto a base panel to a maximum overall height of 80".**
- **Stackable panels should not be added to 80" high base panels.**
- **The width of a stackable panel must match the width of the base panel.**
- **Finish channels and full height end trim must be used and match the combined height of the base and stackable panel(s).**



Please review the Systems price list for additional information on the stackable panels.

Additional notes

Here are some additional things to know about the Interworks EQ panels and the CAP functionality:

- Do not mirror panel symbols. Doing so will cause problems with the CAP functionality.
- The Interworks EQ powered panels include harnesses only. All jumper cables required to connect one powered panel to another powered panel must be included.
- Whenever there are panels of different heights at a 2-way, 3-way or 4-way configuration, the height of the finish channel generated will equal the height of the lowest panel in the configuration. This could leave an opening or gap between the taller panels.
- Any communication channels required to carry phone and data cables through a change of height condition must be placed manually.
- Side rail and wire way end caps are packaged in a set of 6. The program will calculate the number of packages needed based on your layout. If you need to verify the total number of individual end caps in your drawing turn on the **Count** column in your Worksheet file and it will be shown there.
- Freeze layer **A-FURN-3-PNLS-FIN-5** to see through any panels that include glass.